

SERVICE MANUAL

STEREO CAR CASSETTE RECEIVER

BASIC TAPE MECHANISM : CDS-363AG1-A

- This Service Manual is the "Revision Publishing" and replaces "Simple Manual" (S/M Code No. 09-023-455-8T1).

aiwa

S/M Code No. 09-025-455-8R1

REVISION
DATA

SPECIFICATIONS -1/1

RADIO SECTION

(FM)

Frequency Range: 87.5 MHz – 108 MHz

Usable Sensitivity: 12.7 dBf

50 dB Quieting Sensitivity: 17.2 dBf

IF Rejection: 100 dB

Frequency Response: 30 Hz – 15,000 Hz

S/N Ratio: 67 dB

Stereo Separation: 35 dB at 1 kHz

Alternate Channel Selectivity: 98 dB

Capture Ratio: 3 dB

(MW)

Frequency Range: 531 kHz – 1,602 kHz

Usable Sensitivity: 30 μ V (30 dB)

(LW)

Frequency Range: 144 kHz – 288kHz(1-kHz/9-kHz steps)

Usable Sensitivity: 30 μ V (30 dB)

TAPE SECTION

Tape Speed: 4.8 cm/sec. ($1\frac{7}{8}$ ips)

S/N Ratio: 50 dB

Frequency Response: 40 Hz – 14,000 Hz

Stereo Separation: 40 dB

AUDIO SECTION

Max. Power Output: 40 W x 4 channels

AUX input

Input Sensitivity (load impedance) AUX: 300 mV (10 k Ω)

GENERAL

Power-Supply Voltage: 14.4 V (11 to 16 V allowable),
DC, negative ground

Load Impedance: 4 Ω

Tone Control: Bass \pm 10 dB at 100 Hz, Treble \pm 10 dB at 10 kHz

Preamp Output Voltage (load impedance): 2.2 V (10 k Ω)

Installed Size: 182 (W) x 53 (H) x 155 (D) mm
($7\frac{1}{4}$ (W) x $2\frac{1}{8}$ (H) x $6\frac{1}{8}$ (D) inches)

- Design and specifications are subject to change without notice.

ACCESSORIES PARTS LIST -1/1

- ! = Δ SAFTY PARTS
- C = Components marked

All components used on this model at the production line are shown in this service manual.

However, please note that not all components will be available as spare parts for after-sales service.

Components marked S and O are designated as spare parts for service and will be stocked at the spare parts centers.

Components marked X and R are not designated as spare parts for after sales service, and will not be stocked at the spare parts centers.

UNIT-NAME	! C	REF-NO	PARTS-NO	PARTS-NAME	SUFFIX&MODEL
					CT-R432M
					YZSF
	O	AS1001	87-253-032-410	U+2-3 BLK	a
	O	AS1002	87-B10-141-010	NUT,5 TYPE-2	a
	O	AS1003	87-B10-144-010	W,5.2-10-0.5	a
	O	AS1004	87-B10-145-010	W-SPR,5.3-8.5-1.5	a
	O	AS1005	8C-KCG-060-110	CASE,DFP C BLK	a
	O	AS1006	8Z-KC1-231-110	HLDR,HALF -C	a
	O	AS1007	8Z-KC1-232-010	KEY,REMOVE -C	a
	O	AS1008	8Z-KC1-235-010	HLDR,REAR MTG	a
	O	AS1009	87-B10-143-010	UT1+5-15 W/O SLOT	a
	O	AS1010	8Z-KC1-244-010	S-SCREW,5*6 TH+ TAPPING ST	a
	O	AS1011	8Z-KC1-250-010	S-SCREW,HEXAGON	a
	X	AS1012	87-B50-079-010	LIST,FACILITY(B)-0007	a
	O	AS1013	8C-KCG-913-010	IB,INST YZ,YV (9L,R)F	a
	O	AS1014	8C-KTA-905-010	IB,YZ(9L)F R432M	a

ELECTRICAL PARTS LIST -1/7

! = Δ SAFTY PARTS
 C = Components marked

All components used on this model at the production line are shown in this service manual.

However, please note that not all components will be available as spare parts for after-sales service.

Components marked S and O are designated as spare parts for service and will be stocked at the spare parts centers.

Components marked X and R are not designated as spare parts for after sales service, and will not be stocked at the spare parts centers.

UNIT-NAME	! C	REF-NO	PARTS-NO	PARTS-NAME	SUFFIX&MODEL
					CT-R432M
					YZSF
AUX	O	J	0601	85-HRL-623-010	JACK,3.5 BLK ST BLK
AUX	O	W	0601	8A-KC7-611-010	F-CABLE,3P (AUX)
FRONT	O	C	0601	87-012-272-080	C-CAP,U 680P-50 K B GRM
FRONT	O	C	0602	87-A10-504-080	C-CAP,U 0.047-16 K B
FRONT	O	C	0603	87-A10-504-080	C-CAP,U 0.047-16 K B
FRONT	O	C	0604	87-A10-504-080	C-CAP,U 0.047-16 K B
FRONT	O	C	0605	87-A10-504-080	C-CAP,U 0.047-16 K B
FRONT	O	CN	0601	88-KTA-602-010	C-CONN,15P CAM-B67
FRONT	S	D	0601	87-A40-817-040	C-ZENER,STZ6.8N
FRONT	S	D	0602	87-A40-817-040	C-ZENER,STZ6.8N
FRONT	S	IC	0601	88-KT1-608-010	C-IC,LC75854W
FRONT	O	LCD	0601	8C-KTF-610-010	LCD,CKT-10/15
FRONT	O	LED	0601	87-A91-355-040	C-LED,BR1112H-TR-RED
FRONT	O	LED	0602	87-A91-355-040	C-LED,BR1112H-TR-RED
FRONT	O	LED	0604	87-A41-118-040	C-LED,SEC1E01C-1 BLU
FRONT	O	LED	0605	87-A41-118-040	C-LED,SEC1E01C-1 BLU
FRONT	O	LED	0606	87-A41-118-040	C-LED,SEC1E01C-1 BLU
FRONT	O	LED	0610	87-A41-085-010	LED,NSPW315BS WHT
FRONT	S	Q	0601	89-324-122-040	C-TR,2SC2412KR
FRONT	S	Q	0603	89-324-122-040	C-TR,2SC2412KR
					CT-R432M
					YZSF
FRONT	O	R	0601	88-108-103-080	C-RES,U 10K-1/16W J
FRONT	O	R	0602	88-108-102-080	C-RES,U 1K-1/16W J
FRONT	O	R	0603	88-108-102-080	C-RES,U 1K-1/16W J
FRONT	O	R	0604	88-108-102-080	C-RES,U 1K-1/16W J
FRONT	O	R	0605	88-108-102-080	C-RES,U 1K-1/16W J
FRONT	X	R	0606	88-108-104-080	C-RES,U 100K-1/16W J
FRONT	X	R	0607	88-108-104-080	C-RES,U 100K-1/16W J
FRONT	X	R	0608	88-108-392-080	C-RES,U 3.9K-1/16W J
FRONT	O	R	0609	88-108-101-080	C-RES,U 100-1/16W J
FRONT	O	R	0610	88-108-101-080	C-RES,U 100-1/16W J
FRONT	O	R	0611	88-108-101-080	C-RES,U 100-1/16W J
FRONT	X	R	0612	88-108-683-080	C-RES,U 68K-1/16W J
FRONT	X	R	0613	88-108-471-080	C-RES,U 470-1/16W J
FRONT	X	R	0614	88-108-331-080	C-RES,U 330-1/16W J
FRONT	X	R	0615	88-108-152-080	C-RES,U 1.5K-1/16W J
FRONT	X	R	0616	88-108-682-080	C-RES,U 6.8K-1/16W J
FRONT	X	R	0617	88-108-391-080	C-RES,U 390-1/16W J
FRONT	X	R	0618	88-108-391-080	C-RES,U 390-1/16W J
FRONT	X	R	0619	88-108-391-080	C-RES,U 390-1/16W J
FRONT	O	R	0624	88-108-102-080	C-RES,U 1K-1/16W J
					CT-R432M
					YZSF
FRONT	X	R	0625	88-108-682-080	C-RES,U 6.8K-1/16W J
FRONT	O	SW	0601	87-A91-987-080	SW,TACT SKQCAB
FRONT	O	SW	0602	87-A90-164-080	SW,TACT SKQNB(N)
FRONT	O	SW	0603	87-036-339-080	C-SW,TACT SKQM
FRONT	O	SW	0604	87-A90-164-080	SW,TACT SKQNB(N)
FRONT	O	SW	0605	87-A91-987-080	SW,TACT SKQCAB
FRONT	O	SW	0606	87-A90-164-080	SW,TACT SKQNB(N)
FRONT	O	SW	0607	87-A91-987-080	SW,TACT SKQCAB
FRONT	O	SW	0608	87-A90-164-080	SW,TACT SKQNB(N)
FRONT	O	SW	0609	87-A91-987-080	SW,TACT SKQCAB
FRONT	O	SW	0610	87-036-339-080	C-SW,TACT SKQM
FRONT	O	SW	0611	87-A90-164-080	SW,TACT SKQNB(N)
FRONT	O	SW	0612	87-A90-164-080	SW,TACT SKQNB(N)
FRONT	O	SW	0613	87-A91-987-080	SW,TACT SKQCAB
FRONT	O	SW	0614	87-A91-987-080	SW,TACT SKQCAB
FRONT	O	SW	0615	87-A90-164-080	SW,TACT SKQNB(N)
FRONT	O	SW	0616	87-A91-987-080	SW,TACT SKQCAB
FRONT	O	SW	0621	87-A92-329-010	SW,RTRY SRP-1211VD
HEAD	O	CNA	0201	8Z-KTG-651-010	CONN ASSY,3P HEAD
HEAD	O	CNA	0202	8Z-KTG-652-010	CONN ASSY,8P MOTOR
					CT-R432M
					YZSF
MAIN	O	ANT	0101	8Z-KT1-614-010	ANT,AW-002
MAIN	O	C	0101	87-012-195-080	C-CAP,U 100P-50 J CH GRM
MAIN	O	C	0102	87-012-286-080	C-CAP,U 0.01-25 K B GRM
MAIN	O	C	0103	87-012-282-080	C-CAP,U 4700P-50 K B GRM
MAIN	O	C	0104	87-010-379-040	CAP,E 22-16 M 11L SME
MAIN	O	C	0105	87-010-787-080	C-CAP,U 0.022-25 K B GRM
MAIN	O	C	0106	87-010-553-040	CAP,E 47-16 M 5L SRE
MAIN	O	C	0108	87-010-194-080	C-CAP,S 0.047-25 Z F
MAIN	O	C	0109	87-012-286-080	C-CAP,U 0.01-25 K B GRM
MAIN	O	C	0110	87-010-759-080	C-CAP,U 0.1-25 Z F CM/CB
MAIN	O	C	0111	87-012-286-080	C-CAP,U 0.01-25 K B GRM
MAIN	O	C	0113	87-010-759-080	C-CAP,U 0.1-25 Z F CM/CB
MAIN	O	C	0114	87-010-787-080	C-CAP,U 0.022-25 K B GRM
MAIN	O	C	0115	87-012-286-080	C-CAP,U 0.01-25 K B GRM
MAIN	O	C	0116	87-010-495-040	CAP,E 2.2-50 M 5L SRE
MAIN	O	C	0117	87-012-282-080	C-CAP,U 4700P-50 K B GRM
MAIN	O	C	0118	87-010-067-040	CAP,E 0.1-50 M 5L SRE
MAIN	O	C	0119	87-012-286-080	C-CAP,U 0.01-25 K B GRM
MAIN	O	C	0121	87-010-786-080	C-CAP,U 0.018-25 K B GRM
MAIN	O	C	0122	87-010-786-080	C-CAP,U 0.018-25 K B GRM

ELECTRICAL PARTS LIST -2/7

! = Δ SAFTY PARTS
 C = Components marked

All components used on this model at the production line are shown in this service manual.

However, please note that not all components will be available as spare parts for after-sales service.

Components marked S and O are designated as spare parts for service and will be stocked at the spare parts centers.

Components marked X and R are not designated as spare parts for after sales service, and will not be stocked at the spare parts centers.

UNIT-NAME	! C	REF-NO	PARTS-NO	PARTS-NAME	SUFFIX&MODEL
					CT-R432M
					YZSF
MAIN	O C	0123	87-016-526-080	C-CAP,S 0.47-16 BK	a
MAIN	O C	0124	87-016-526-080	C-CAP,S 0.47-16 BK	a
MAIN	O C	0151	87-012-183-080	C-CAP,U 30P-50 J CH GRM	a
MAIN	O C	0152	87-012-182-080	C-CAP,U 27P-50 J CH GRM	a
MAIN	O C	0153	87-010-495-040	CAP,E 2.2-50 M 5L SRE	a
MAIN	O C	0154	87-012-336-080	C-CAP,U 330P-50 J SL GRM	a
MAIN	O C	0155	87-012-271-080	C-CAP,U 560P-50 K B GRM	a
MAIN	O C	0156	87-010-759-080	C-CAP,U 0.1-25 Z F CM/CB	a
MAIN	O C	0201	87-012-274-080	C-CAP,U 1000P-50 K B GRM	a
MAIN	O C	0202	87-012-274-080	C-CAP,U 1000P-50 K B GRM	a
MAIN	O C	0203	87-010-498-040	CAP,E 10-16 M 5L SRE	a
MAIN	O C	0204	87-010-498-040	CAP,E 10-16 M 5L SRE	a
MAIN	O C	0205	87-010-263-040	CAP,E 100-10 M 11L SME	a
MAIN	O C	0206	87-010-263-040	CAP,E 100-10 M 11L SME	a
MAIN	O C	0207	87-010-787-080	C-CAP,U 0.022-25 K B GRM	a
MAIN	O C	0208	87-010-787-080	C-CAP,U 0.022-25 K B GRM	a
MAIN	O C	0209	87-010-494-040	CAP,E 1-50 M 5L SRE	a
MAIN	O C	0210	87-010-494-040	CAP,E 1-50 M 5L SRE	a
MAIN	O C	0211	87-010-263-040	CAP,E 100-10 M 11L SME	a
MAIN	O C	0212	87-010-759-080	C-CAP,U 0.1-25 Z F CM/CB	a
					CT-R432M
					YZSF
MAIN	O C	0213	87-010-380-040	CAP,E 47-16 M 11L SME	a
MAIN	O C	0401	87-010-494-040	CAP,E 1-50 M 5L SRE	a
MAIN	O C	0402	87-010-494-040	CAP,E 1-50 M 5L SRE	a
MAIN	O C	0403	87-010-805-080	C-CAP,S 1-16 Z F GRM	a
MAIN	O C	0404	87-010-805-080	C-CAP,S 1-16 Z F GRM	a
MAIN	O C	0405	87-012-280-080	C-CAP,U 3300P-50 K B GRM	a
MAIN	O C	0406	87-012-280-080	C-CAP,U 3300P-50 K B GRM	a
MAIN	O C	0407	87-010-787-080	C-CAP,U 0.022-25 K B GRM	a
MAIN	O C	0408	87-010-787-080	C-CAP,U 0.022-25 K B GRM	a
MAIN	O C	0409	87-010-498-040	CAP,E 10-16 M 5L SRE	a
MAIN	O C	0410	87-010-498-040	CAP,E 10-16 M 5L SRE	a
MAIN	O C	0411	87-016-083-080	C-CAP,S 0.15-16 K R	a
MAIN	O C	0412	87-016-083-080	C-CAP,S 0.15-16 K R	a
MAIN	O C	0413	87-016-083-080	C-CAP,S 0.15-16 K R	a
MAIN	O C	0414	87-016-083-080	C-CAP,S 0.15-16 K R	a
MAIN	O C	0415	87-010-498-040	CAP,E 10-16 M 5L SRE	a
MAIN	O C	0416	87-010-498-040	CAP,E 10-16 M 5L SRE	a
MAIN	O C	0417	87-010-497-040	CAP,E 4.7-35 M 5L SRE	a
MAIN	O C	0418	87-010-404-040	CAP,E 4.7-50 M 11L SME	a
MAIN	O C	0419	87-010-404-040	CAP,E 4.7-50 M 11L SME	a
					CT-R432M
					YZSF
MAIN	O C	0420	87-010-497-040	CAP,E 4.7-35 M 5L SRE	a
MAIN	O C	0423	87-010-787-080	C-CAP,U 0.022-25 K B GRM	a
MAIN	O C	0424	87-010-555-040	CAP,E 100-10 M 5L SRE	a
MAIN	O C	0425	87-010-759-080	C-CAP,U 0.1-25 Z F CM/CB	a
MAIN	O C	0426	87-010-379-040	CAP,E 22-16 M 11L SME	a
MAIN	O C	0427	87-010-759-080	C-CAP,U 0.1-25 Z F CM/CB	a
MAIN	O C	0428	87-010-759-080	C-CAP,U 0.1-25 Z F CM/CB	a
MAIN	O C	0429	87-010-759-080	C-CAP,U 0.1-25 Z F CM/CB	a
MAIN	O C	0430	87-012-286-080	C-CAP,U 0.01-25 K B GRM	a
MAIN	O C	0431	87-010-494-040	CAP,E 1-50 M 5L SRE	a
MAIN	O C	0432	87-010-378-040	CAP,E 10-16 M 11L SME	a
MAIN	O C	0433	87-010-378-040	CAP,E 10-16 M 11L SME	a
MAIN	O C	0434	87-012-270-080	C-CAP,U 470P-50 K B GRM	a
MAIN	O C	0435	87-012-270-080	C-CAP,U 470P-50 K B GRM	a
MAIN	O C	0501	87-016-526-080	C-CAP,S 0.47-16 BK	a
MAIN	O C	0502	87-016-526-080	C-CAP,S 0.47-16 BK	a
MAIN	O C	0503	87-016-526-080	C-CAP,S 0.47-16 BK	a
MAIN	O C	0504	87-016-526-080	C-CAP,S 0.47-16 BK	a
MAIN	O C	0505	87-012-273-080	C-CAP,U 820P-50 K B GRM	a
MAIN	O C	0506	87-012-273-080	C-CAP,U 820P-50 K B GRM	a
					CT-R432M
					YZSF
MAIN	O C	0507	87-012-273-080	C-CAP,U 820P-50 K B GRM	a
MAIN	O C	0508	87-012-273-080	C-CAP,U 820P-50 K B GRM	a
MAIN	O C	0509	87-010-378-040	CAP,E 10-16 M 11L SME	a
MAIN	O C	0510	87-010-379-040	CAP,E 22-16 M 11L SME	a
MAIN	O C	0511	87-010-544-040	CAP,E 0.1-50 M 11L SME	a
MAIN	O C	0512	87-010-759-080	C-CAP,U 0.1-25 Z F CM/CB	a
MAIN	O C	0513	8A-KC7-623-000	CAP,E 2200-16 125 BT	a
MAIN	O C	0514	87-012-278-080	C-CAP,U 2200P-50 K B GRM	a
MAIN	O C	0701	87-010-494-040	CAP,E 1-50 M 5L SRE	a
MAIN	O C	0702	87-010-494-040	CAP,E 1-50 M 5L SRE	a
MAIN	O C	0705	87-012-286-080	C-CAP,U 0.01-25 K B GRM	a
MAIN	O C	0706	87-012-286-080	C-CAP,U 0.01-25 K B GRM	a
MAIN	O C	0751	87-010-494-040	CAP,E 1-50 M 5L SRE	a
MAIN	O C	0752	87-010-494-040	CAP,E 1-50 M 5L SRE	a
MAIN	O C	0753	87-010-263-040	CAP,E 100-10 M 11L SME	a
MAIN	O C	0801	87-010-759-080	C-CAP,U 0.1-25 Z F CM/CB	a
MAIN	O C	0802	87-012-278-080	C-CAP,U 2200P-50 K B GRM	a
MAIN	O C	0803	87-010-759-080	C-CAP,U 0.1-25 Z F CM/CB	a
MAIN	O C	0804	87-010-935-040	CAP,E 220-16 M VR	a
MAIN	O C	0805	87-010-380-040	CAP,E 47-16 M 11L SME	a

ELECTRICAL PARTS LIST -3/7

! = Δ SAFTY PARTS
 C = Components marked

All components used on this model at the production line are shown in this service manual.
 However, please note that not all components will be available as spare parts for after-sales service.
 Components marked S and O are designated as spare parts for service and will be stocked at the spare parts centers.
 Components marked X and R are not designated as spare parts for after sales service, and will not be stocked at the spare parts centers.

UNIT-NAME	! C	REF-NO	PARTS-NO	PARTS-NAME	SUFFIX&MODEL
					CT-R432M
					YZSF
MAIN	O C	0806	87-010-787-080	C-CAP,U 0.022-25 K B GRM	a
MAIN	O C	0901	87-010-544-040	CAP,E 0.1-50 M 11L SME	a
MAIN	O C	0902	87-010-787-080	C-CAP,U 0.022-25 K B GRM	a
MAIN	O C	0903	87-010-555-040	CAP,E 100-10 M 5L SRE	a
MAIN	O C	0904	87-016-039-090	CAP,DL 0.022F-5.5 Z 70 FM	a
MAIN	O C	0907	87-012-172-080	C-CAP,U 10P-50 D CH GRM	a
MAIN	O C	0908	87-012-172-080	C-CAP,U 10P-50 D CH GRM	a
MAIN	O C	0909	87-010-759-080	C-CAP,U 0.1-25 Z F CM/CB	a
MAIN	O C	0910	87-012-274-080	C-CAP,U 1000P-50 K B GRM	a
MAIN	O C	0911	87-012-286-080	C-CAP,U 0.01-25 K B GRM	a
MAIN	O C	0914	87-012-195-080	C-CAP,U 100P-50 J CH GRM	a
MAIN	O C	0915	87-012-195-080	C-CAP,U 100P-50 J CH GRM	a
MAIN	O CN	0201	87-A60-620-010	CONN,3P V 2MM JMT	a
MAIN	O CN	0202	87-099-408-010	CONN,8P V WHT EH	a
MAIN	O CN	0701	88-KTA-603-010	CONN,15P CAM-B68	a
MAIN	O CNA0801	8A-KT1-645-010	CONN ASSY,8P ISO-BLACK-B	a	
MAIN	O CNA0802	8A-KT1-646-010	CONN ASSY,8P ISO-WHITE-B	a	
MAIN	S D	0101	87-020-465-080	DIODE,1SS133	a
MAIN	S D	0102	87-020-465-080	DIODE,1SS133	a
MAIN	S D	0151	87-070-136-080	ZENER,MTZJ5.1B	a
					CT-R432M
					YZSF
MAIN	X D	0401	88-121-101-080	RES,100-1/8W J	a
MAIN	S D	0402	87-A40-250-040	C-DIODE,DAN217	a
MAIN	S D	0403	87-020-465-080	DIODE,1SS133	a
MAIN	S D	0501	87-001-783-080	DIODE,1N4002	a
MAIN	S D	0502	87-001-783-080	DIODE,1N4002	a
MAIN	S D	0503	87-001-783-080	DIODE,1N4002	a
MAIN	S D	0504	87-001-783-080	DIODE,1N4002	a
MAIN	S D	0505	87-001-783-080	DIODE,1N4002	a
MAIN	S D	0506	87-001-783-080	DIODE,1N4002	a
MAIN	S D	0507	87-001-783-080	DIODE,1N4002	a
MAIN	S D	0508	87-001-783-080	DIODE,1N4002	a
MAIN	S D	0509	87-A40-509-080	ZENER,MTZJ6.8C	a
MAIN	S D	0510	87-020-331-040	C-DIODE,DAN202K	a
MAIN	S D	0705	87-020-331-040	C-DIODE,DAN202K	a
MAIN	S D	0751	87-017-932-080	ZENER,MTZJ6.2B	a
MAIN	S D	0752	87-017-932-080	ZENER,MTZJ6.2B	a
MAIN	S D	0753	87-017-932-080	ZENER,MTZJ6.2B	a
MAIN	S D	0754	87-017-932-080	ZENER,MTZJ6.2B	a
MAIN	S D	0755	87-017-932-080	ZENER,MTZJ6.2B	a
MAIN	S D	0756	87-017-932-080	ZENER,MTZJ6.2B	a
					CT-R432M
					YZSF
MAIN	S D	0801	87-A40-798-010	DIODE,1N5402 (3A/200V)	a
MAIN	S D	0802	87-A40-509-080	ZENER,MTZJ6.8C	a
MAIN	S D	0803	87-070-334-080	ZENER,MTZJ10B	a
MAIN	S D	0806	87-A40-620-080	ZENER,MTZJ6.2A	a
MAIN	S D	0807	87-A40-509-080	ZENER,MTZJ6.8C	a
MAIN	S D	0808	87-020-465-080	DIODE,1SS133	a
MAIN	S D	0901	87-020-465-080	DIODE,1SS133	a
MAIN	S D	0902	87-070-136-080	ZENER,MTZJ5.1B	a
MAIN	S D	0906	87-020-465-080	DIODE,1SS133	a
MAIN	! S F	0801	8B-KC1-621-010	FUSE,15A 32V	a
MAIN	S IC	0151	88-KT1-607-080	C-IC,SAA6579T	a
MAIN	S IC	0201	87-027-539-010	IC,LA3161	a
MAIN	S IC	0401	8Z-KT1-622-010	C-IC,LC75374E	a
MAIN	S IC	0501	87-A22-246-010	IC,TA8252H	a
MAIN	S IC	0901	8C-KTA-611-030	C-IC,UPD178078GF-565-3BA	a
MAIN	O J	0401	87-A61-225-110	JACK,PIN 2P XR-401	a
MAIN	O J	0751	8A-KC7-620-010	JACK,DIN 13P SKDS1302	a
MAIN	X JR	0101	88-118-000-080	C-JUMPER,S	a
MAIN	X JR	0103	88-118-000-080	C-JUMPER,S	a
MAIN	X JR	0104	88-118-000-080	C-JUMPER,S	a
					CT-R432M
					YZSF
MAIN	X JR	0105	88-118-000-080	C-JUMPER,S	a
MAIN	X JR	0106	88-118-000-080	C-JUMPER,S	a
MAIN	X JR	0108	88-118-000-080	C-JUMPER,S	a
MAIN	X JR	0109	88-118-000-080	C-JUMPER,S	a
MAIN	X JR	0110	88-118-000-080	C-JUMPER,S	a
MAIN	X JR	0111	88-118-000-080	C-JUMPER,S	a
MAIN	X JR	0113	88-118-000-080	C-JUMPER,S	a
MAIN	X JR	0115	88-118-000-080	C-JUMPER,S	a
MAIN	X JR	0116	88-118-000-080	C-JUMPER,S	a
MAIN	X JR	0117	88-118-000-080	C-JUMPER,S	a
MAIN	X JR	0118	88-118-000-080	C-JUMPER,S	a
MAIN	X JR	0119	88-118-000-080	C-JUMPER,S	a
MAIN	X JR	0120	88-118-000-080	C-JUMPER,S	a
MAIN	X JR	0121	88-118-000-080	C-JUMPER,S	a
MAIN	X JR	0122	88-118-000-080	C-JUMPER,S	a
MAIN	X JR	0123	88-118-000-080	C-JUMPER,S	a
MAIN	X JR	0124	88-118-000-080	C-JUMPER,S	a
MAIN	X JR	0125	88-118-000-080	C-JUMPER,S	a
MAIN	X JR	0126	88-118-000-080	C-JUMPER,S	a
MAIN	X JR	0127	88-118-000-080	C-JUMPER,S	a

ELECTRICAL PARTS LIST -4/7

! = Δ SAFTY PARTS
 C = Components marked

All components used on this model at the production line are shown in this service manual.

However, please note that not all components will be available as spare parts for after-sales service.

Components marked S and O are designated as spare parts for service and will be stocked at the spare parts centers.

Components marked X and R are not designated as spare parts for after sales service, and will not be stocked at the spare parts centers.

UNIT-NAME	! C	REF-NO	PARTS-NO	PARTS-NAME	SUFFIX&MODEL
					CT-R432M
					YZSF
MAIN	X	JR	0129	88-129-000-080	C-JUMPER, 3216
MAIN	X	JR	0256	88-118-000-080	C-JUMPER,S
MAIN	X	JR	0258	88-118-000-080	C-JUMPER,S
MAIN	X	JR	0259	88-118-000-080	C-JUMPER,S
MAIN	X	JR	0260	88-118-000-080	C-JUMPER,S
MAIN	X	JR	0262	88-118-000-080	C-JUMPER,S
MAIN	O	JW	0165	87-A11-144-080	CAP,TC U 0.1-50 K B
MAIN	X	JW	0231	88-121-102-080	RES,1K-1/8W J
MAIN	O	L	0101	87-003-143-080	COIL,4.7UH K LAL02
MAIN	O	L	0102	8Z-KT1-619-010	COIL,68MH K7-D
MAIN	O	L	0701	87-003-143-080	COIL,4.7UH K LAL02
MAIN	O	L	0801	8B-KCF-615-010	FLTR,AMORPHOUS -CHOKE
MAIN	O	L	0901	87-003-149-080	COIL,47UH J LAL02
MAIN	S	Q	0101	87-A30-427-040	C-TR,DTC114EKA
MAIN	S	Q	0102	87-A30-289-040	C-TR,2SA1037AK(Q)
MAIN	S	Q	0103	89-324-122-040	C-TR,2SC2412KR
MAIN	S	Q	0105	89-324-122-040	C-TR,2SC2412KR
MAIN	S	Q	0106	89-324-122-040	C-TR,2SC2412KR
MAIN	S	Q	0107	89-324-122-040	C-TR,2SC2412KR
MAIN	S	Q	0108	89-324-122-040	C-TR,2SC2412KR
					CT-R432M
					YZSF
MAIN	S	Q	0201	87-A30-689-080	TR,DTB123YS
MAIN	S	Q	0202	87-A30-427-040	C-TR,DTC114EKA
MAIN	S	Q	0403	89-324-122-040	C-TR,2SC2412KR
MAIN	S	Q	0404	87-A30-287-040	C-TR,DTC114TKA
MAIN	S	Q	0405	87-A30-287-040	C-TR,DTC114TKA
MAIN	S	Q	0406	87-A30-287-040	C-TR,DTC114TKA
MAIN	S	Q	0407	87-A30-287-040	C-TR,DTC114TKA
MAIN	S	Q	0408	87-A30-282-040	C-TR,DTA114TKA
MAIN	S	Q	0410	87-A30-287-040	C-TR,DTC114TKA
MAIN	S	Q	0501	87-A30-282-040	C-TR,DTA114TKA
MAIN	S	Q	0751	87-A30-294-040	C-TR,DTB123YK
MAIN	S	Q	0752	87-A30-287-040	C-TR,DTC114TKA
MAIN	S	Q	0801	89-213-750-010	TR,2SB1375
MAIN	S	Q	0802	87-A30-427-040	C-TR,DTC114EKA
MAIN	S	Q	0803	89-420-120-010	TR,2SD2012
MAIN	O	Q	0804	89-418-580-080	TR,2SD1858TV2
MAIN	S	Q	0807	87-A30-427-040	C-TR,DTC114EKA
MAIN	S	Q	0808	87-A30-455-040	C-TR,DTA144EKA
MAIN	X	R	0101	88-121-105-080	RES,1M-1/8W J
MAIN	X	R	0102	88-121-102-080	RES,1K-1/8W J
					CT-R432M
					YZSF
MAIN	X	R	0103	88-121-181-080	RES,180-1/8W J
MAIN	X	R	0104	88-121-100-080	RES,10-1/8W J
MAIN	O	R	0105	88-108-473-080	C-RES,U 47K-1/16W J
MAIN	X	R	0106	88-108-333-080	C-RES,U 33K-1/16W J
MAIN	O	R	0107	88-108-473-080	C-RES,U 47K-1/16W J
MAIN	O	R	0108	88-108-103-080	C-RES,U 10K-1/16W J
MAIN	X	R	0109	88-108-222-080	C-RES,U 2.2K-1/16W J
MAIN	X	R	0110	88-118-330-080	C-RES,S 33-1/10W J
MAIN	X	R	0111	88-118-100-080	C-RES,S 10-1/10W J
MAIN	X	R	0112	88-108-821-080	C-RES,U 820-1/16W J
MAIN	X	R	0113	88-108-000-080	C-JUMPER,U
MAIN	O	R	0114	88-108-103-080	C-RES,U 10K-1/16W J
MAIN	O	R	0115	88-108-103-080	C-RES,U 10K-1/16W J
MAIN	X	R	0116	88-121-102-080	RES,1K-1/8W J
MAIN	O	R	0118	88-108-102-080	C-RES,U 1K-1/16W J
MAIN	X	R	0119	88-108-472-080	C-RES,U 4.7K-1/16W J
MAIN	X	R	0121	88-121-682-080	RES,6.8K-1/8W J
MAIN	X	R	0122	88-121-682-080	RES,6.8K-1/8W J
MAIN	O	R	0123	88-108-473-080	C-RES,U 47K-1/16W J
MAIN	O	R	0124	88-108-224-080	C-RES,U 220K-1/16W J
					CT-R432M
					YZSF
MAIN	X	R	0151	88-108-222-080	C-RES,U 2.2K-1/16W J
MAIN	X	R	0152	88-121-331-080	RES,330-1/8W J
MAIN	O	R	0201	88-108-224-080	C-RES,U 220K-1/16W J
MAIN	O	R	0202	88-108-224-080	C-RES,U 220K-1/16W J
MAIN	X	R	0203	88-108-390-080	C-RES,U 39-1/16W J
MAIN	X	R	0204	88-108-390-080	C-RES,U 39-1/16W J
MAIN	O	R	0205	88-108-562-080	C-RES,U 5.6K-1/16W J
MAIN	O	R	0206	88-108-562-080	C-RES,U 5.6K-1/16W J
MAIN	X	R	0207	88-108-154-080	C-RES,U 150K-1/16W J
MAIN	X	R	0208	88-108-154-080	C-RES,U 150K-1/16W J
MAIN	O	R	0209	88-108-102-080	C-RES,U 1K-1/16W J
MAIN	O	R	0210	88-108-102-080	C-RES,U 1K-1/16W J
MAIN	X	R	0211	88-121-470-080	RES,47-1/8W J
MAIN	X	R	0212	88-121-472-080	RES,4.7K-1/8W J
MAIN	X	R	0213	88-121-472-080	RES,4.7K-1/8W J
MAIN	X	R	0214	88-121-102-080	RES,1K-1/8W J
MAIN	X	R	0215	88-121-473-080	RES,47K-1/8W J
MAIN	X	R	0216	88-121-473-080	RES,47K-1/8W J
MAIN	X	R	0217	88-108-104-080	C-RES,U 100K-1/16W J
MAIN	O	R	0401	88-108-332-080	C-RES,U 3.3K-1/16W J

ELECTRICAL PARTS LIST -5/7

! = Δ SAFTY PARTS
 C = Components marked

All components used on this model at the production line are shown in this service manual.

However, please note that not all components will be available as spare parts for after-sales service.

Components marked S and O are designated as spare parts for service and will be stocked at the spare parts centers.

Components marked X and R are not designated as spare parts for after sales service, and will not be stocked at the spare parts centers.

UNIT-NAME	! C	REF-NO	PARTS-NO	PARTS-NAME	SUFFIX&MODEL
					CT-R432M
					YZSF
MAIN		O R	0402 88-108-332-080	C-RES,U 3.3K-1/16W J	a
MAIN		O R	0403 88-108-332-080	C-RES,U 3.3K-1/16W J	a
MAIN		O R	0404 88-108-332-080	C-RES,U 3.3K-1/16W J	a
MAIN		O R	0405 88-108-102-080	C-RES,U 1K-1/16W J	a
MAIN		X R	0406 88-121-102-080	RES,1K-1/8W J	a
MAIN		O R	0407 88-108-102-080	C-RES,U 1K-1/16W J	a
MAIN		X R	0408 88-121-102-080	RES,1K-1/8W J	a
MAIN		X R	0415 88-121-102-080	RES,1K-1/8W J	a
MAIN		X R	0416 88-121-102-080	RES,1K-1/8W J	a
MAIN		X R	0417 88-121-102-080	RES,1K-1/8W J	a
MAIN		X R	0418 88-121-102-080	RES,1K-1/8W J	a
MAIN		X R	0419 88-108-104-080	C-RES,U 100K-1/16W J	a
MAIN		X R	0420 88-108-104-080	C-RES,U 100K-1/16W J	a
MAIN		X R	0421 88-121-472-080	RES,4.7K-1/8W J	a
MAIN		X R	0422 88-108-105-080	C-RES,U 1M-1/16W J	a
MAIN		O R	0423 88-108-102-080	C-RES,U 1K-1/16W J	a
MAIN		X R	0424 88-121-103-080	RES,10K-1/8W J	a
MAIN		X R	0425 88-108-105-080	C-RES,U 1M-1/16W J	a
MAIN		X R	0426 88-121-102-080	RES,1K-1/8W J	a
MAIN		X R	0427 88-121-102-080	RES,1K-1/8W J	a
					CT-R432M
					YZSF
MAIN		X R	0428 88-121-102-080	RES,1K-1/8W J	a
MAIN		X R	0429 88-121-222-080	RES,2.2K-1/8W J	a
MAIN		X R	0430 88-121-103-080	RES,10K-1/8W J	a
MAIN		X R	0432 88-108-000-080	C-JUMPER,U	a
MAIN		X R	0501 88-121-123-080	RES,12K-1/8W J	a
MAIN		X R	0502 88-121-123-080	RES,12K-1/8W J	a
MAIN		X R	0503 88-121-123-080	RES,12K-1/8W J	a
MAIN		X R	0504 88-121-123-080	RES,12K-1/8W J	a
MAIN		X R	0505 88-108-183-080	C-RES,U 18K-1/16W J	a
MAIN		X R	0506 88-108-183-080	C-RES,U 18K-1/16W J	a
MAIN		X R	0507 88-108-183-080	C-RES,U 18K-1/16W J	a
MAIN		X R	0508 88-108-183-080	C-RES,U 18K-1/16W J	a
MAIN		X R	0509 88-121-222-080	RES,2.2K-1/8W J	a
MAIN		X R	0510 88-121-102-080	RES,1K-1/8W J	a
MAIN		O R	0511 88-108-223-080	C-RES,U 22K-1/16W J	a
MAIN		X R	0521 88-121-102-080	RES,1K-1/8W J	a
MAIN		O R	0522 88-108-272-080	C-RES,U 2.7K-1/16W J	a
MAIN		X R	0523 88-121-104-080	RES,100K-1/8W J	a
MAIN		X R	0524 88-121-104-080	RES,100K-1/8W J	a
MAIN		X R	0525 88-121-104-080	RES,100K-1/8W J	a
					CT-R432M
					YZSF
MAIN		X R	0526 88-121-104-080	RES,100K-1/8W J	a
MAIN		X R	0701 88-121-472-080	RES,4.7K-1/8W J	a
MAIN		X R	0702 88-121-472-080	RES,4.7K-1/8W J	a
MAIN		O R	0703 88-108-562-080	C-RES,U 5.6K-1/16W J	a
MAIN		O R	0704 88-108-562-080	C-RES,U 5.6K-1/16W J	a
MAIN		X R	0705 88-121-102-080	RES,1K-1/8W J	a
MAIN		X R	0706 88-121-102-080	RES,1K-1/8W J	a
MAIN		X R	0707 88-121-102-080	RES,1K-1/8W J	a
MAIN		X R	0708 88-121-102-080	RES,1K-1/8W J	a
MAIN		X R	0709 88-121-102-080	RES,1K-1/8W J	a
MAIN		O R	0710 88-108-103-080	C-RES,U 10K-1/16W J	a
MAIN		O R	0711 88-108-103-080	C-RES,U 10K-1/16W J	a
MAIN		X R	0712 88-108-104-080	C-RES,U 100K-1/16W J	a
MAIN		X R	0751 88-121-472-080	RES,4.7K-1/8W J	a
MAIN		X R	0752 88-121-472-080	RES,4.7K-1/8W J	a
MAIN		X R	0753 88-108-392-080	C-RES,U 3.9K-1/16W J	a
MAIN		X R	0754 88-108-392-080	C-RES,U 3.9K-1/16W J	a
MAIN		O R	0755 88-108-102-080	C-RES,U 1K-1/16W J	a
MAIN		O R	0756 88-108-102-080	C-RES,U 1K-1/16W J	a
MAIN		O R	0757 88-108-102-080	C-RES,U 1K-1/16W J	a
					CT-R432M
					YZSF
MAIN		O R	0758 88-108-102-080	C-RES,U 1K-1/16W J	a
MAIN		O R	0759 88-108-102-080	C-RES,U 1K-1/16W J	a
MAIN		O R	0760 88-108-102-080	C-RES,U 1K-1/16W J	a
MAIN		O R	0761 88-108-102-080	C-RES,U 1K-1/16W J	a
MAIN		X R	0762 88-121-223-080	RES,22K-1/8W J	a
MAIN		O R	0801 88-108-223-080	C-RES,U 22K-1/16W J	a
MAIN		X R	0802 88-140-229-080	RES,2.2-1/2W J	a
MAIN		X R	0803 88-121-103-080	RES,10K-1/8W J	a
MAIN		X R	0804 88-140-681-080	RES,680-1/2W J	a
MAIN		X R	0805 88-140-229-080	RES,2.2-1/2W J	a
MAIN		X R	0806 88-121-471-080	RES,470-1/8W J	a
MAIN		X R	0807 88-121-104-080	RES,100K-1/8W J	a
MAIN		X R	0808 88-121-680-080	RES,68-1/8W J	a
MAIN		X R	0809 88-121-272-080	RES,2.7K-1/8W J	a
MAIN		X R	0902 88-121-224-080	RES,220K-1/8W J	a
MAIN		X R	0903 88-121-473-080	RES,47K-1/8W J	a
MAIN		X R	0904 88-108-000-080	C-JUMPER,U	a
MAIN		X R	0905 88-121-102-080	RES,1K-1/8W J	a
MAIN		X R	0906 88-121-102-080	RES,1K-1/8W J	a
MAIN		X R	0908 88-108-104-080	C-RES,U 100K-1/16W J	a

ELECTRICAL PARTS LIST -6/7

! = Δ SAFTY PARTS
 C = Components marked

All components used on this model at the production line are shown in this service manual.

However, please note that not all components will be available as spare parts for after-sales service.

Components marked S and O are designated as spare parts for service and will be stocked at the spare parts centers.

Components marked X and R are not designated as spare parts for after sales service, and will not be stocked at the spare parts centers.

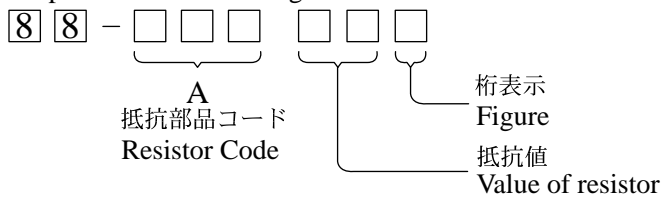
UNIT-NAME	! C	REF-NO	PARTS-NO	PARTS-NAME	SUFFIX&MODEL
					CT-R432M
					YZSF
MAIN	X R	0909	88-108-104-080	C-RES,U 100K-1/16W J	a
MAIN	X R	0910	88-108-104-080	C-RES,U 100K-1/16W J	a
MAIN	X R	0912	88-121-473-080	RES,47K-1/8W J	a
MAIN	X R	0913	88-121-473-080	RES,47K-1/8W J	a
MAIN	X R	0914	88-121-473-080	RES,47K-1/8W J	a
MAIN	X R	0915	88-121-222-080	RES,2.2K-1/8W J	a
MAIN	O R	0918	88-108-473-080	C-RES,U 47K-1/16W J	a
MAIN	O R	0920	88-108-473-080	C-RES,U 47K-1/16W J	a
MAIN	X R	0921	88-121-222-080	RES,2.2K-1/8W J	a
MAIN	X R	0922	88-121-222-080	RES,2.2K-1/8W J	a
MAIN	X R	0923	88-121-222-080	RES,2.2K-1/8W J	a
MAIN	X R	0924	88-121-222-080	RES,2.2K-1/8W J	a
MAIN	X R	0925	88-108-104-080	C-RES,U 100K-1/16W J	a
MAIN	X R	0926	88-108-104-080	C-RES,U 100K-1/16W J	a
MAIN	X R	0927	88-108-104-080	C-RES,U 100K-1/16W J	a
MAIN	X R	0928	88-108-104-080	C-RES,U 100K-1/16W J	a
MAIN	X R	0929	88-108-104-080	C-RES,U 100K-1/16W J	a
MAIN	X R	0930	88-108-104-080	C-RES,U 100K-1/16W J	a
MAIN	O R	0933	88-108-223-080	C-RES,U 22K-1/16W J	a
MAIN	O R	0936	88-108-473-080	C-RES,U 47K-1/16W J	a
					CT-R432M
					YZSF
MAIN	O	SFR0101	87-024-437-080	SFR,100K H RH063MC	a
MAIN	O SW	0901	87-A91-070-010	SW,TACT SKHHLV	a
MAIN	O TU	0101	8C-KTA-621-010	TU UNIT, FAE347-E30	a
MAIN	X W	0101	8Z-KC1-614-010	WIRE,ANT	a
MAIN	X W	0801	8A-KCG-615-010	WIRE,400 P-MUTE	a
MAIN	O X	0151	87-A70-091-010	VIB,XTAL 4.332MHZ CSA-309	a
MAIN	O X	0901	87-A70-372-080	VIB,XTAL 6.3MHZ HC-49/U-S	a

ELECTRICAL PARTS LIST -7/7

○チップ抵抗部品コード／CHIP RESISTOR PART CODE

チップ抵抗部品コードの成り立ち

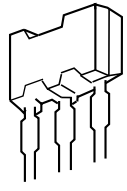
Chip Resistor Part Coding



チップ抵抗
Chip resistor

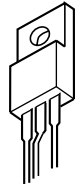
容量 Wattage	種類 Type	許容誤差 Tolerance	記号 Symbol	寸法/Dimensions (mm)			抵抗コード : A Resistor Code : A	
				外形/Form	L	W		t
1/16W	1005	± 5%	CJ		1.0	0.5	0.35	104
1/16W	1608	± 5%	CJ		1.6	0.8	0.45	108
1/10W	2125	± 5%	CJ		2	1.25	0.45	118
1/8W	3216	± 5%	CJ		3.2	1.6	0.55	128

TRANSISTOR ILLUSTRATION -1/1



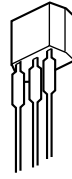
E C B

2SD1858TV2



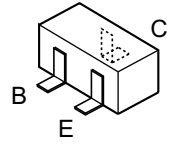
B C E

2SB1375
2SD2012



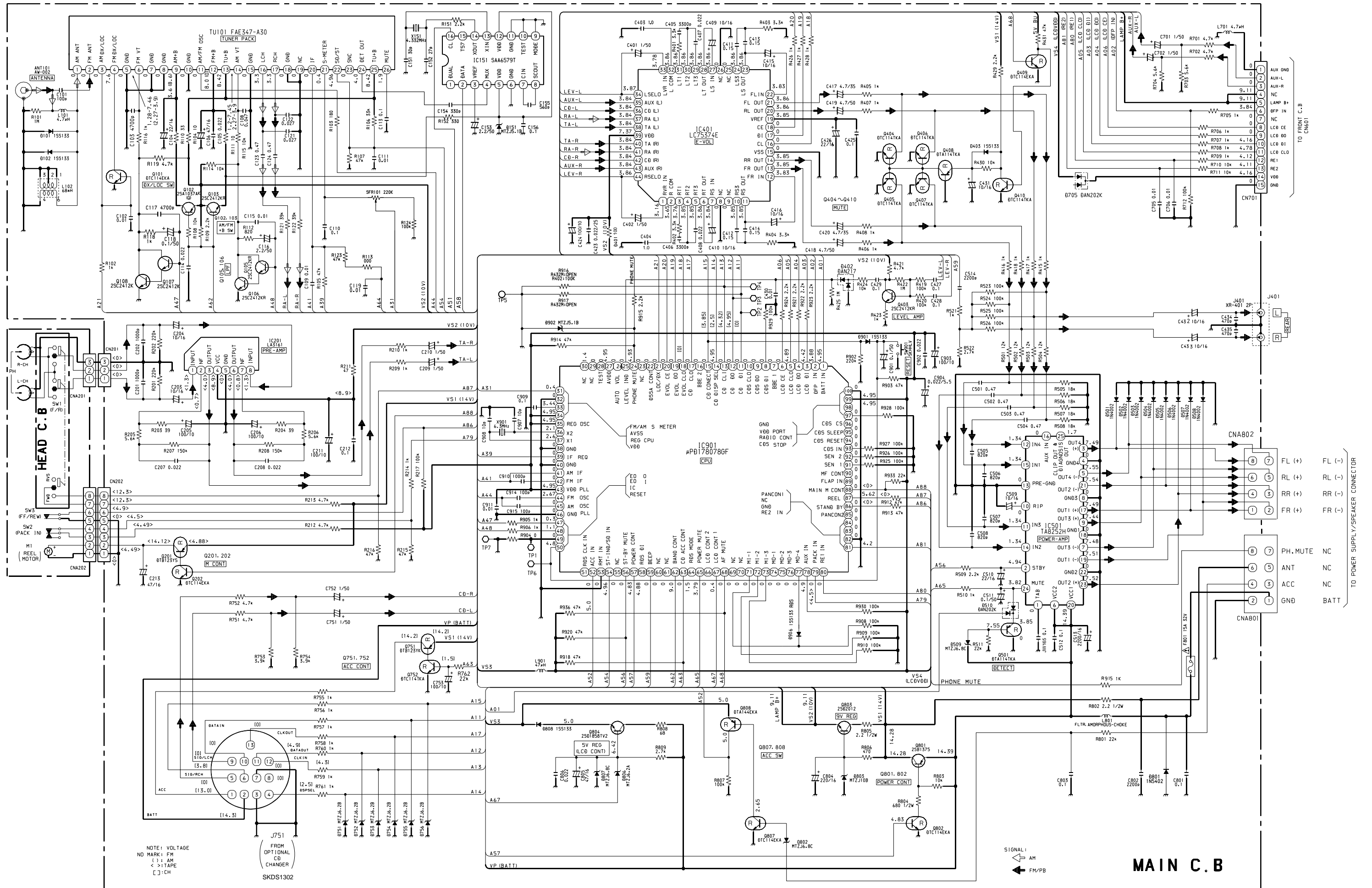
E C B

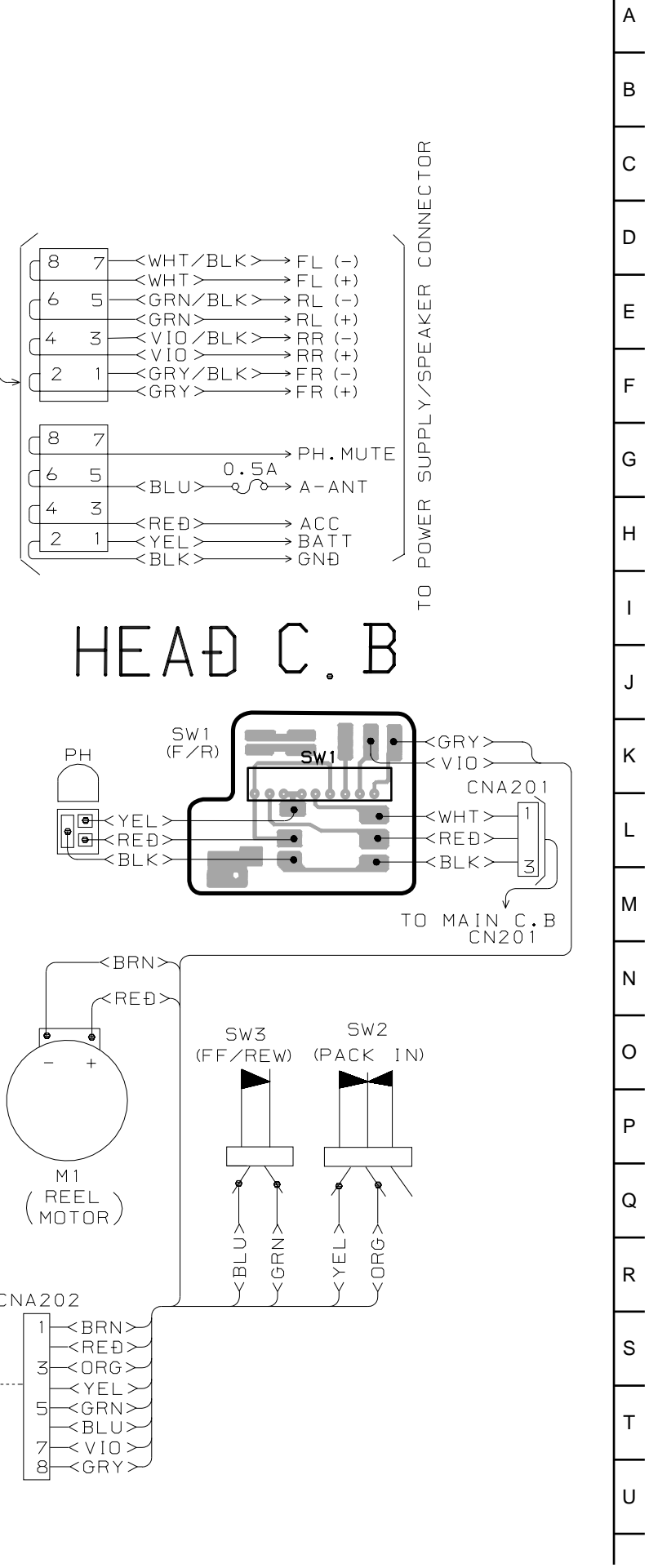
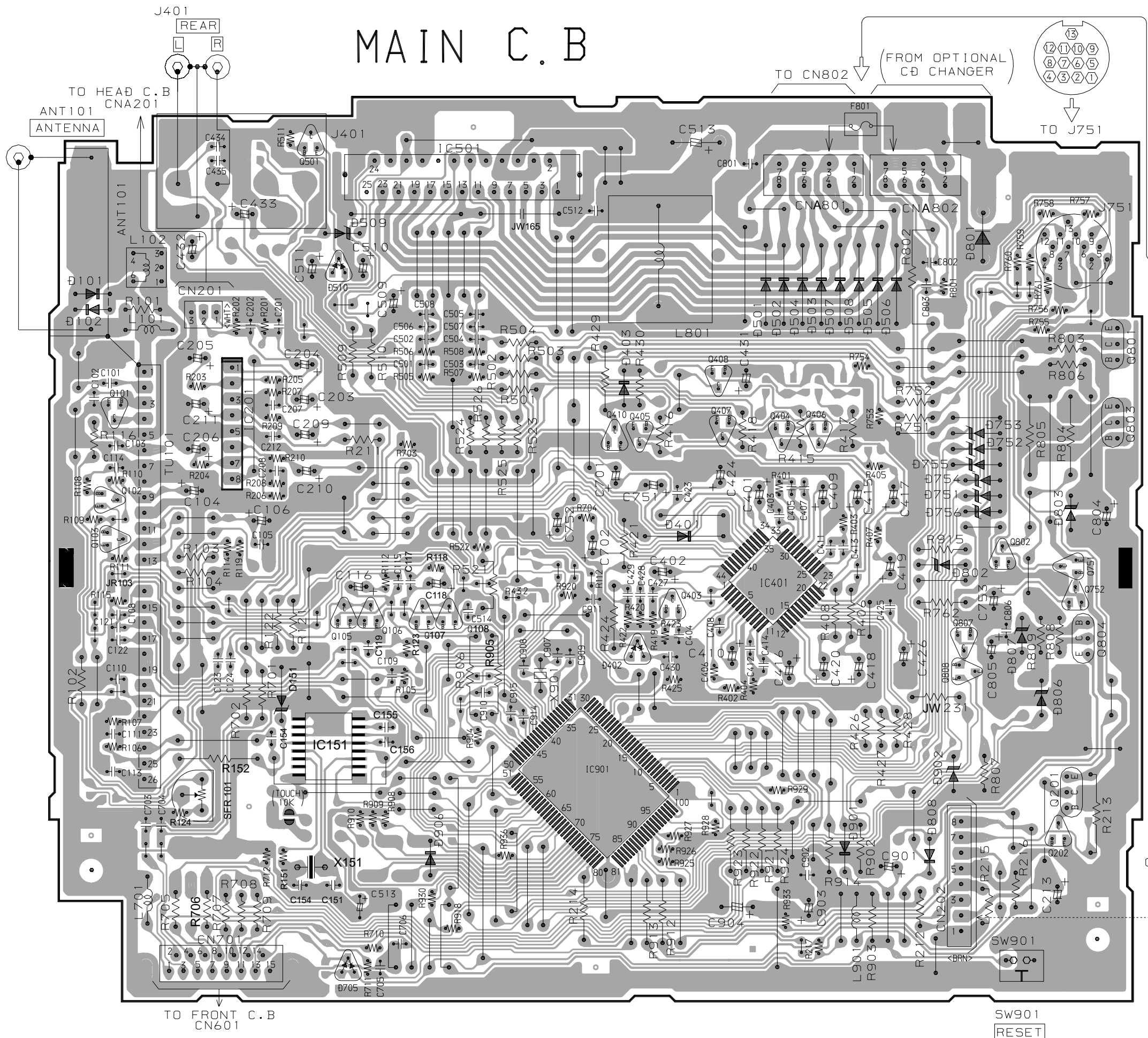
DTB123

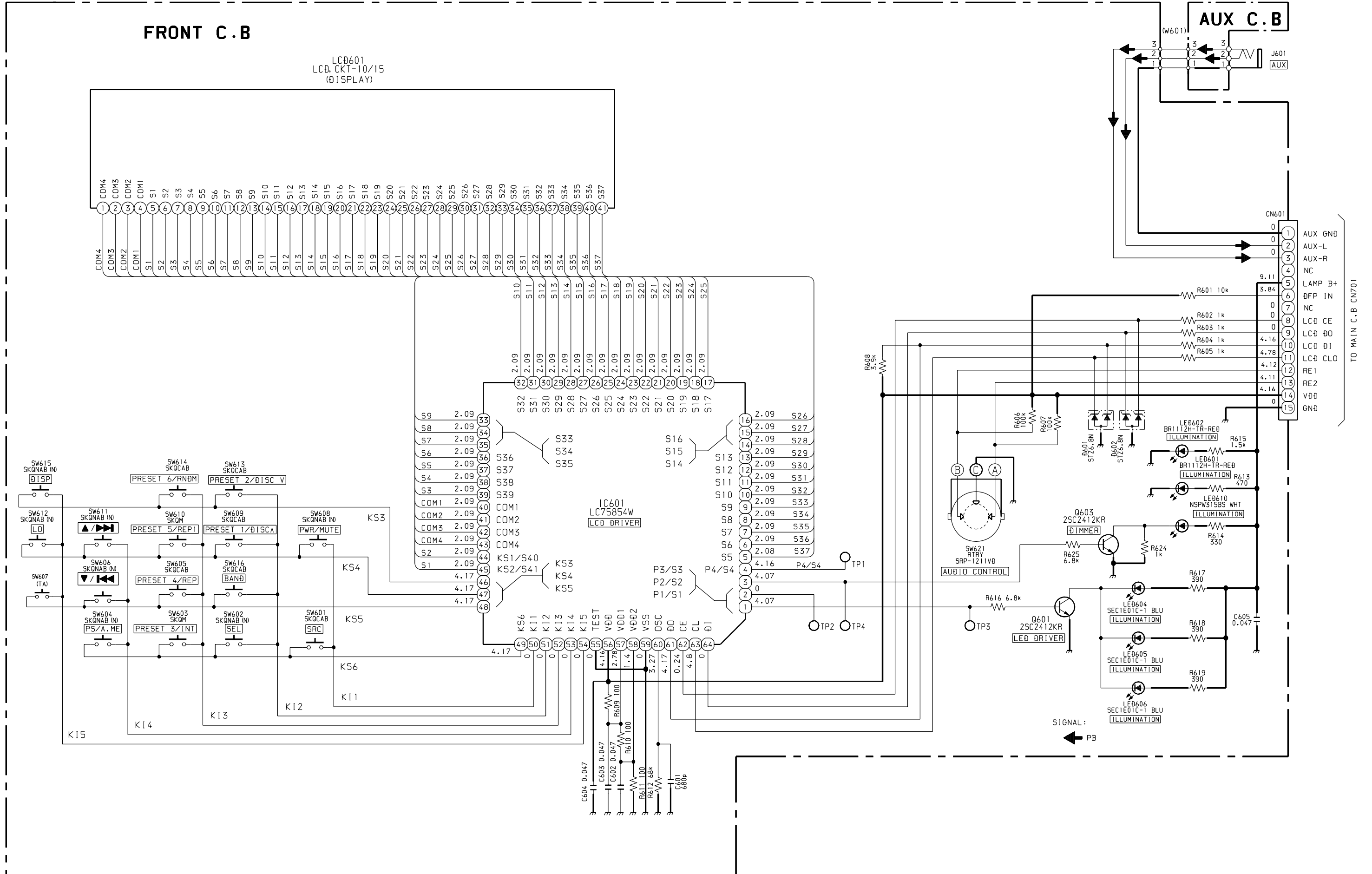


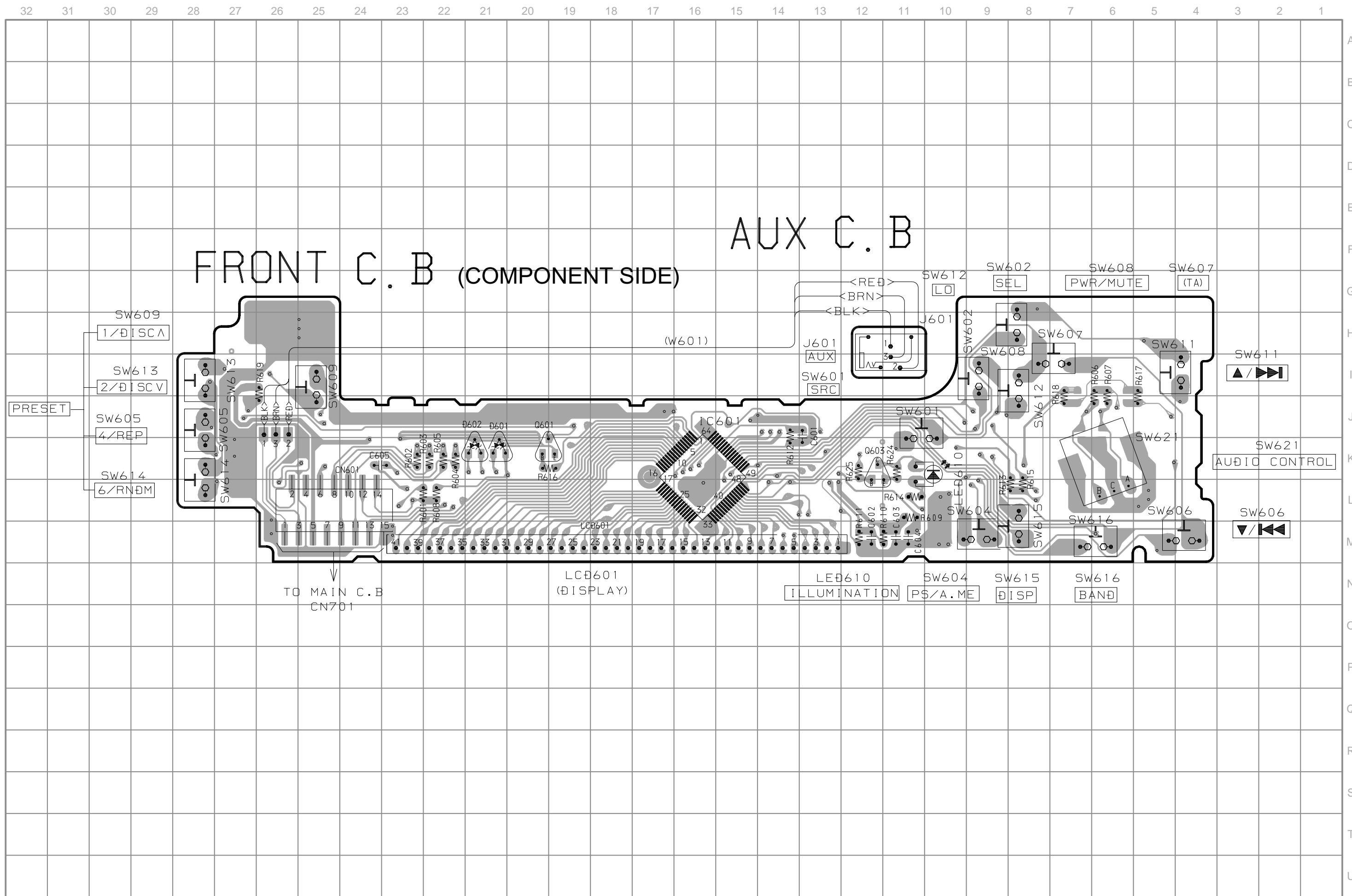
2SC2412KR
DTA114TKA
DTA144EKA
DTB123YK
DTC114EKA
DTC114TKA

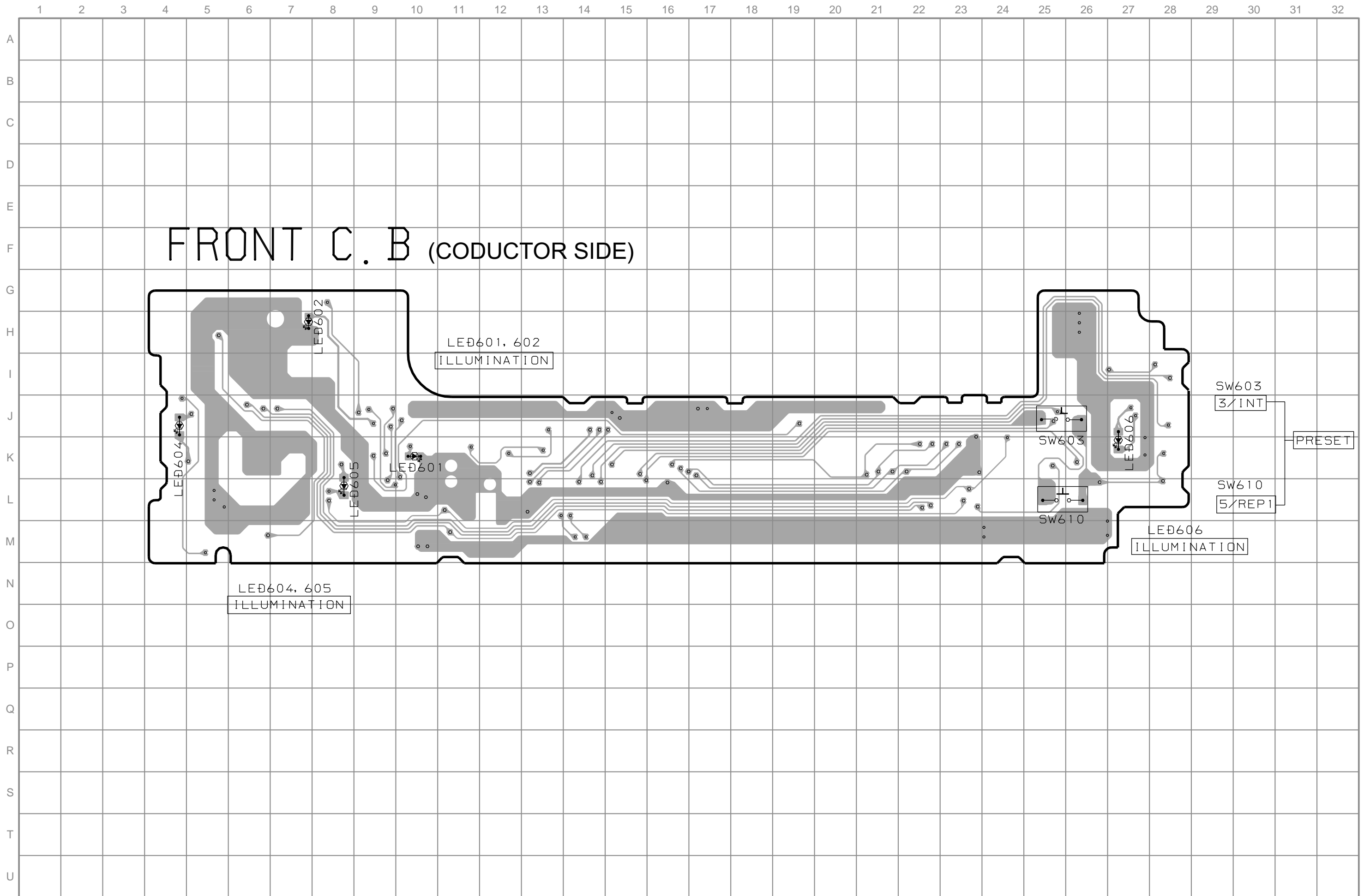
SCHEMATIC DIAGRAM -1/2 (MAIN/HEAD)





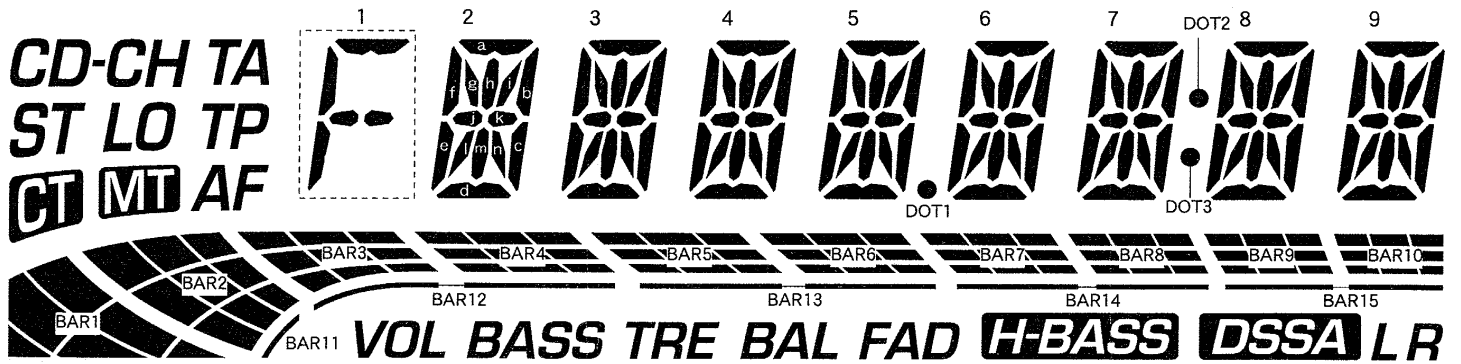




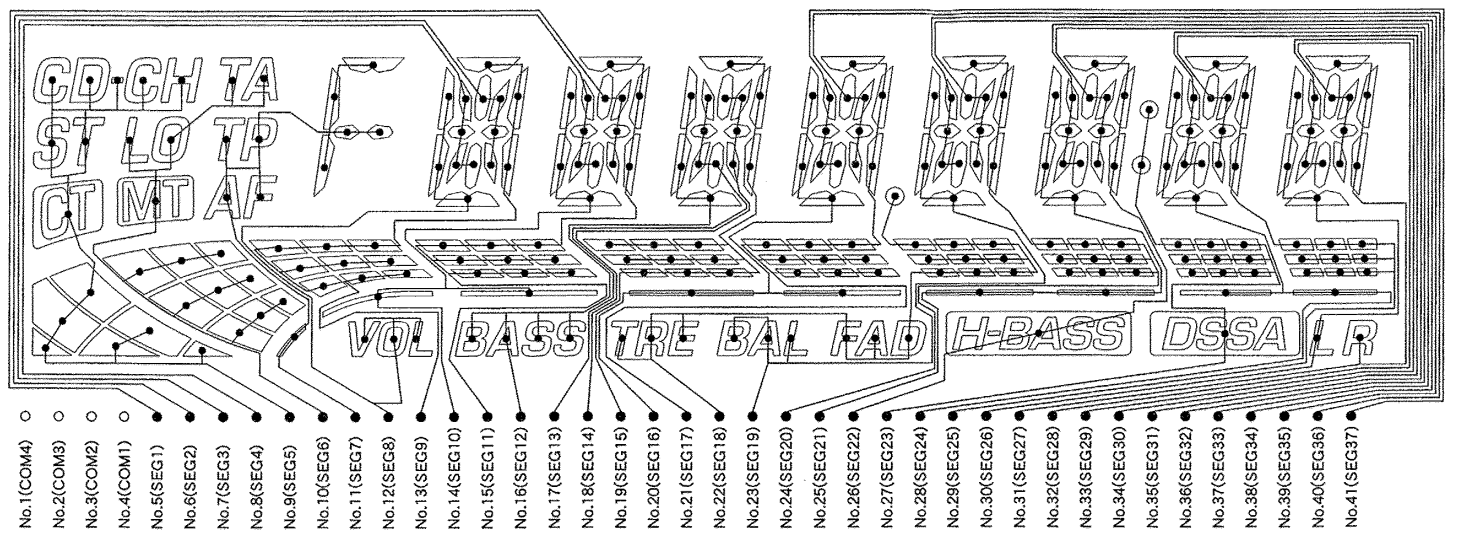


LCD DIAGRAM -1/2 (LCD, CKT-10 / 15)

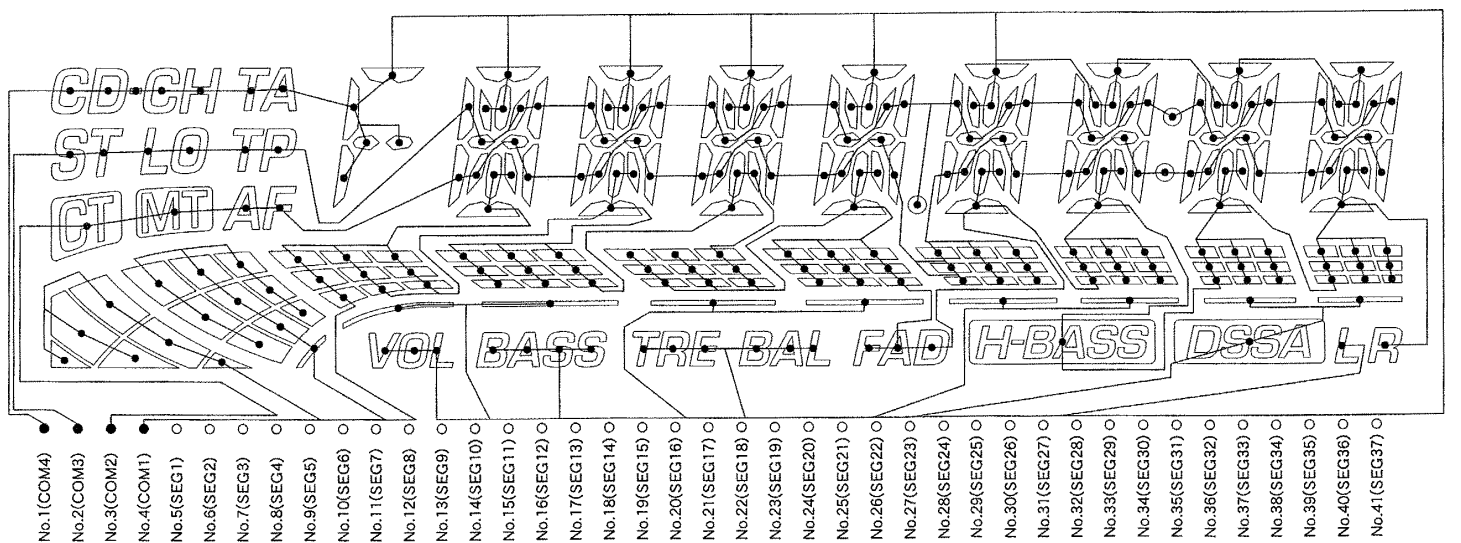
CHARACTER NAME



SEGMENT WIRING



COMMON WIRING



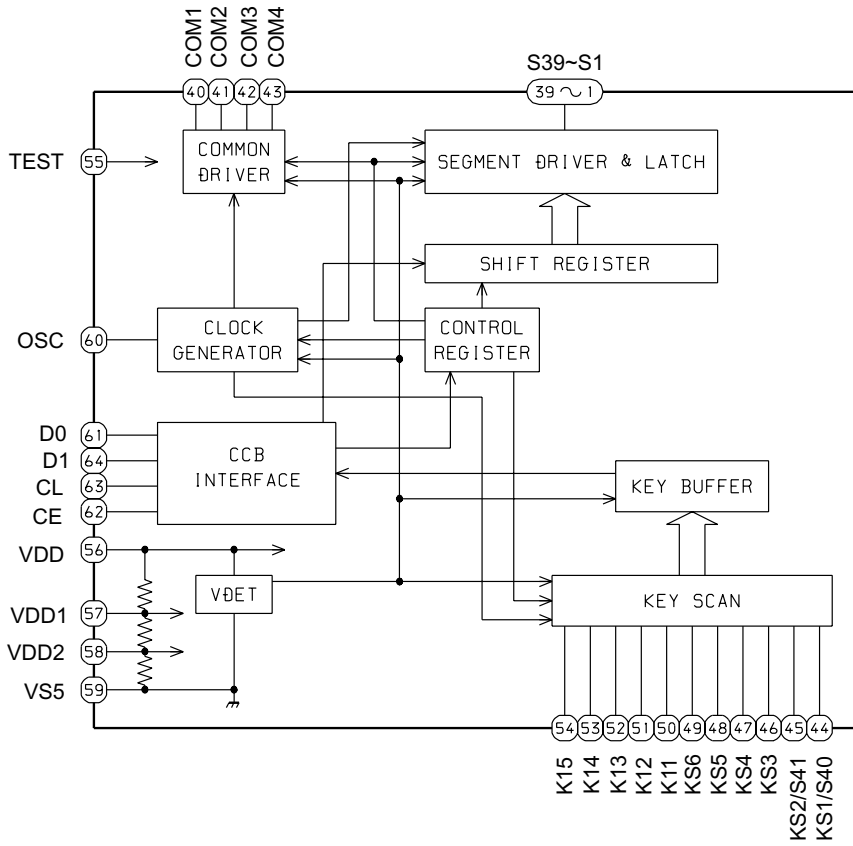
LCD DIAGRAM -2/2 (LCD, CKT-10 / 15)

WIRING TABLE

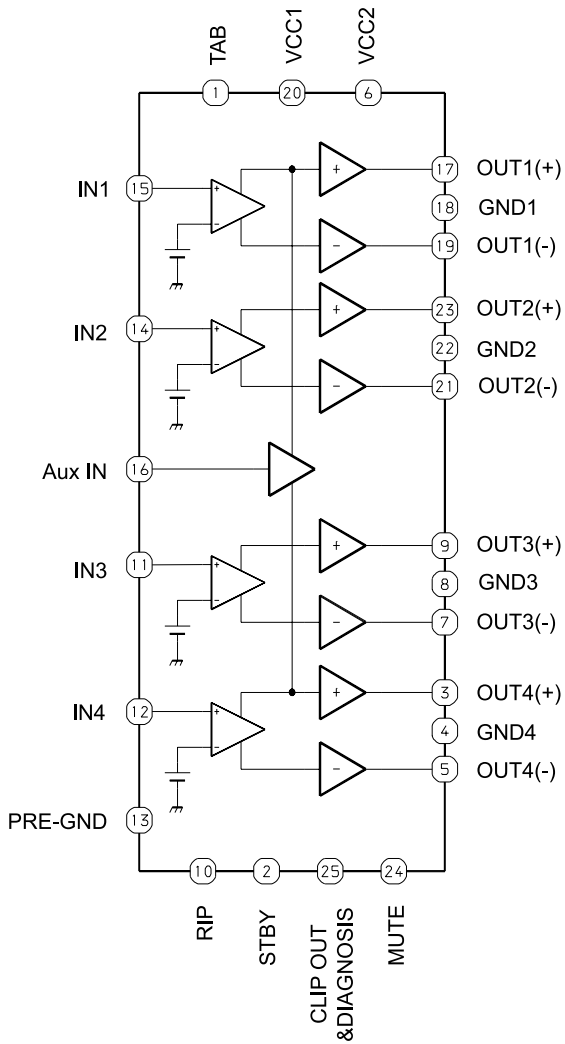
No	1	2	3	4	5	6	7	8	9	10	11	12	13	14
COM1	--	--	---	COM1	3n	3m	2n	2m	BAR1	BAR2	BAR11	2d	BAR3	3d
COM2	--	--	COM2	--	3k	3l	2k	2l	CT	MT	AF	2e	2c	3e
COM3	--	COM3	--	--	3i	3j	2i	2j	ST	LO	TP	2f	2b	3f
COM4	COM4	--	--	--	3h	3g	2h	2g	CD-CH	TA	1	VOL	2a	BAR12
No	15	16	17	18	19	20	21	22	23	24	25	26	27	28
COM1	BAR4	4d	4m	4n	BAR5	5d	BAR6	FAD	6d	BAR8	7d	H-BASS	BAR9	8d
COM2	3c	4e	4l	4k	4c	5e	5c	BAR7	6e	6c	7e	7c	DOT3	8e
COM3	3b	4f	4j	4i	4b	5f	5b	DOT1	6f	6b	7f	7b	DOT2	8f
COM4	3a	BASS	4g	4h	4a	BAR13	5a	TRE	BAL	6a	BAR14	7a	DSSA	BAR15
No	29	30	31	32	33	34	35	36	37	38	39	40	41	
COM1	BAR10	9d	R	9n	9m	8n	8m	7n	7m	6n	6m	5n	5m	
COM2	8c	9e	9c	9k	9l	8k	8l	7k	7l	6k	6l	5k	5l	
COM3	8b	9f	9b	9i	9j	8i	8j	7i	7j	6i	6j	5i	5j	
COM4	8a	L	9a	9h	9g	8h	8g	7h	7g	6h	6g	5h	5g	

IC BLOCK DIAGRAM -1/2

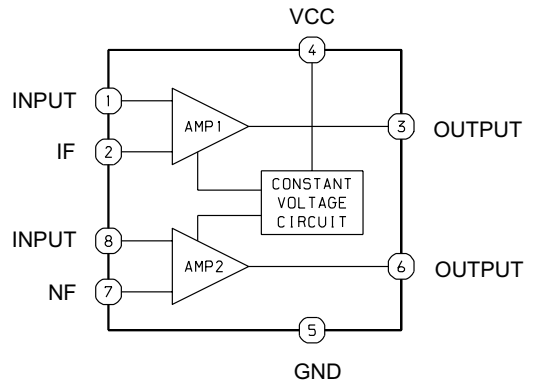
IC,LC75854W



IC, TA8252H

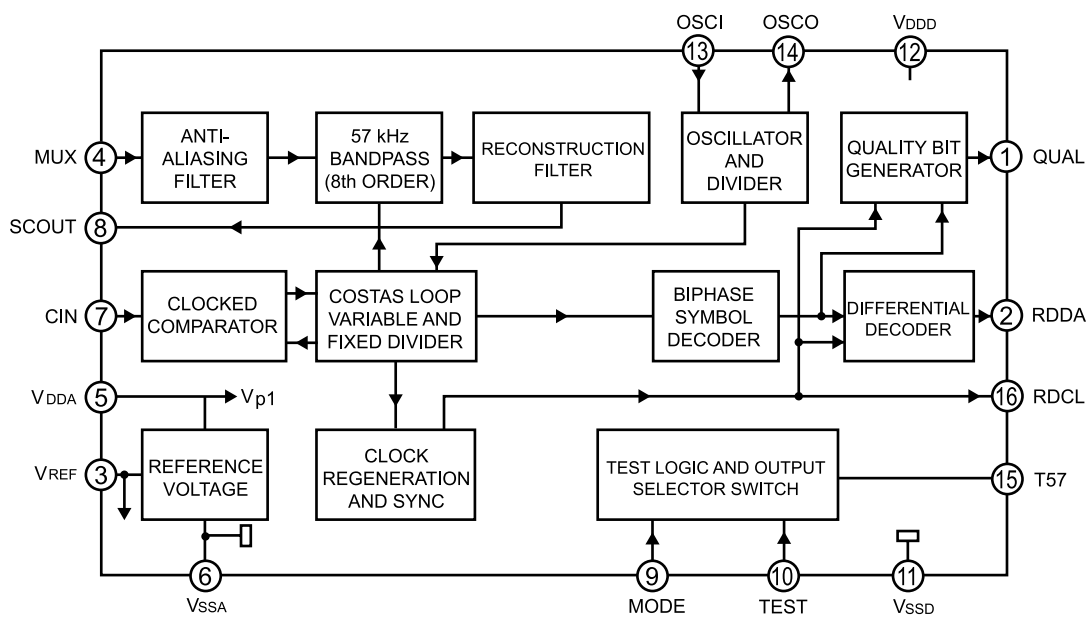


IC, LA3161



IC BLOCK DIAGRAM -2/2

IC, SAA6579T



IC DESCRIPTION -1/2 (IC, μ PD178078GF-565-3BA) -1/3

Pin No.	Pin Name	I/O	Description
1	BATT IN	I	BATT ON/OFF input.
2	DFP IN	I	Detects whether DFP (front panel) is provided or not.
3	LCD DI	I	LCD driver data input.
4	LCD DO	O	LCD driver data output. Open when not used.
5	LCD CLO	O	LCD driver clock output.
6	LCD CE	O	LCD driver chip enable output.
7	BBE 1	O	BBE select output. Open when not used. (Not used)
8	CDS DI	-	Connected to pull-down resistor.
9	CDS DO	-	Not used.
10	CDS CLO	-	Not used.
11	CD DI	I	Data input from CD changer. Pulled down when not used.
12	CD DO	O	Data output to CD changer. Open when not used.
13	CD CLI	I	Clock input from CD changer. Open when not used.
14	CD DISP SEL	O	Determines the timing with which data is transferred to the head unit. Open when not used.
15	CD CONNECT	I	CD changer connection check. Pulled down when not used.
16	BBE 2	O	BBE select output. Open when not used. (Not used)
17	CD CLO	O	Clock output to CD changer. Open when not used.
18	EVOL CLO	O	Clock output to electronic VR.
19	EVOL DO	O	Data output to electronic VR.
20	EVOL CE	O	Chip enable output to electronic VR.
21	LOC/DX	O	LOC/DX switching output during radio seek. (LOC: "H", DX: "L"). Open when not used.
22	DSSA CONT	O	Outputs "H" only when DSSA L/R are operating.
23	NC	-	Not connected.
24	PHONE MUTE	I	Muting control input -20dB. Mute: "L". Connected to pull-up resistor.
25	LEVEL IND	I	Level meter signal input.
26	AUTO VOL	I	Detects microphone input for auto volume operation. Pulled down when not used. (Not used)
27	AVDD	-	Power supply.
28	TEST	-	Only used in CD model. (Not used)
29, 30	NC	-	Not connected.
31	FM/AM S METER	I	AF signal input during RDS AF operation and FM S meter signal input.
32	AVSS	-	Ground.
33	REG CPU	-	CPU power regulator.
34	VDD	-	Power supply for port.
35	REG OSC	-	Regulator for oscillator circuit. (Connected to VDD)
36	X2	O	System clock oscillator. (6.3MHz)
37	X1	I	System clock oscillator. (6.3MHz)
38	GND	-	Ground for port.
39	IF REQ	O	Output to request IF count signal.
40	GND	-	Ground.
41	AM IF	I	AM IF count signal input.
42	FM IF	I	FM IF count signal input.
43	VDD PLL	-	Power supply for PLL.

IC DESCRIPTION -1/2 (IC, μ PD178078GF-565-3BA) -2/3

Pin No.	Pin Name	I/O	Description
44	FM OSC	I	FM local oscillation input.
45	AM OSC	I	AM local oscillation input.
46	GND PLL	–	Ground for PLL.
47	EO O	O	Error output from charge pump (for FM).
48	EO I	O	Error output from charge pump (for AM).
49	IC	–	Connected to pull-down resistor.
50	RESET	I	System reset input.
51	RDS CLK IN	I	RDS clock input. Pulled down when not used. (Not used)
52	ACC IN	I	ACC (accessory power supply) ON/OFF input.
53	RMT IN	I	Remote control input. Pulled up when not used. (Connected to GND)
54	ST-IND/SD IN	I	Stop pulse input during FM/AM seek.
55	NC	–	Not connected.
56	ST-BY MUTE	O	Standby/muting output to power amplifier.
57	POWER CONT	O	Unit power control output.
58	RDS DI	I	RDS data input. Pulled down when not used. (Not used)
59	BEEP	O	BEEP output. (3kHz, 50ms)
60, 61	NC	–	Not connected.
62	BAND CONT	O	AM/FM power switching output. AM: "H", FM: "L".
63	CD ACC CONT	O	Transmits the power ON/OFF status of head unit to changer. Open when not used.
64	RDS MODE	O	Outputs "H" during RDS AF operation. Open when not used. (Not used)
65	POWER MUTE	O	Muting output to power amplifier.
66	LCD CONT 2	O	LCD DRV power control 2. (Not used)
67	LCD CONT 1	O	LCD DRV power control 1.
68	AF MUTE	O	Audio muting output.
69, 70	NC	–	Not connected.
71 ~ 73	MI-1 ~ MI-3	I	Diode matrix input for initial setting.
74	MO-1	O	Diode matrix output for initial setting. (Not used)
75	MO-2	O	Diode matrix output for initial setting. (Open demo)
76	MO-3	O	Diode matrix output for initial setting.
77	MO-4	O	Diode matrix output for initial setting. (Not used)
78	AUX IN	–	Connected to pull-up resistor.
79	PACK IN	I	Tape insertion status detection input.
80	RE1 IN	I	Rotary encoder input 1.
81	RE2 IN	I	Rotary encoder input 2.
82	GND	–	Ground.
83	NC	–	Not connected.
84	PANCON1	–	Not used.
85	PANCON2	–	Not used.
86	STAND BY	I	Mechanism stand-by input.
87	REEL	I	Reel pulse input for tape mechanism.
88	MAIN M CONT	O	Main motor control output.
89	FLAP IN	–	Not used.

IC DESCRIPTION -1/2 (IC, μ PD178078GF-565-3BA) -3/3

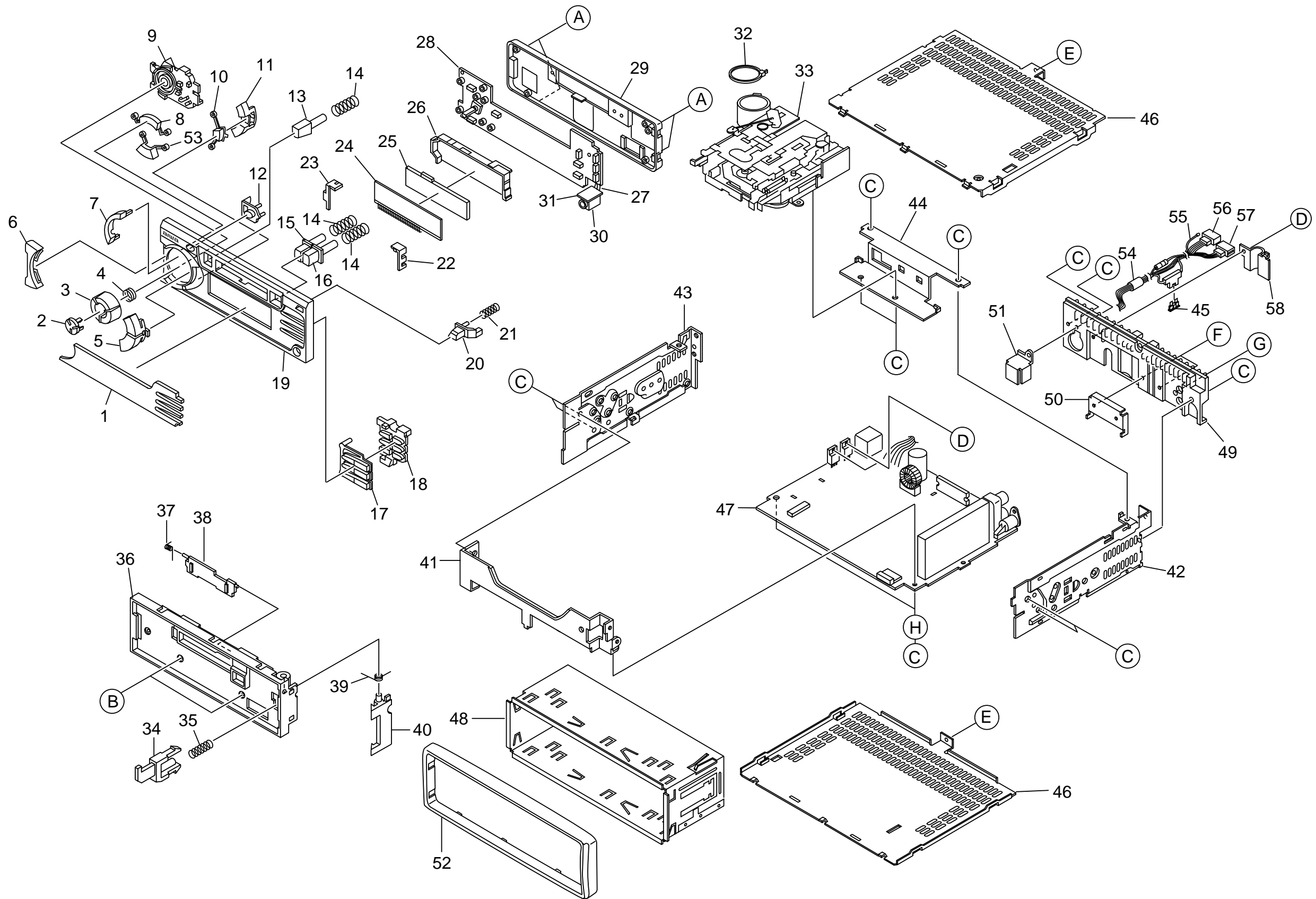
Pin No.	Pin Name	I/O	Description
90	MF CONT	–	Not used.
91	SEN1	–	Connected to pull-down resistor.
92	SEN2	–	Connected to pull-down resistor.
93	CDS IN	–	Connected to pull-down resistor.
94	CDS RESET	–	Not used.
95	CDS SLEEP	–	Not used.
96	CDS CS	–	Not used.
97	CDS STOP	–	Connected to pull-down resistor.
98	RADIO CONT	O	Radio ON/OFF. Power switching output. Radio ON: "H". (Not used)
99	VDD PORT	–	Power supply for port.
100	GND	–	GND.

IC DESCRIPTION -2/2 (LC75374E) -1/2

Pin No.	Pin Name	I/O	Description
1	RVR IN	I	4dB volume control input. Must be driven at a low impedance.
2	R COM	–	1dB volume common pin. (Connected to GND through a capacitor)
3 ~ 5	RT1 ~ RT3	–	For the connection of capacitors that compensate for bass and treble in the tone control circuit. A high-frequency compensation capacitor must be connected between RT1 and RT2. A low-frequency compensation capacitor must be connected between RT2 and RT3.
6	RT OUT	O	Tone control output.
7	RS IN	I	Super bass input. Must be driven at a low impedance.
8	NC	–	Connected to GND.
9	NC	–	Not connected.
10	RS3	O	For the connection of RCH super bass compensation capacitors.
11	RS OUT		
12	FR IN	I	Fader input. Must be driven at a low impedance.
13	FR OUT	O	Fader output. The front and rear sides can be attenuated independently.
14	RR OUT		
15	VSS	–	GND.
16	CL	I	Serial data and clock input for control.
17	DI		
18	CE	–	Chip enable. Data is written in the internal latch when the chip enable signal goes "L" from "H", and each analog switch is activated. Data transfer is enable at "H".
19	VREF	–	Generates a 1/2 VDD power source. A capacitor must be connected between VREF and GND as a troubleshooting against power ripples.
20	RL OUT	O	Fader output. The front and rear sides can be attenuated independently.
21	FL OUT		
22	FL IN	I	Fader input. Must be driven at a low impedance.
23	LS OUT	O	For the connection of LCH super bass compensation capacitors.
24	LS3		
25	NC	–	Not connected.
26	NC	–	Connected to GND.
27	LS IN	I	Super bass input. Must be driven at a low impedance.
28	LT OUT	O	Tone control output.
29 ~ 31	LT3 ~ LT1	–	For the connection of capacitors that compensate for bass and treble in the tone control circuit. A high-frequency compensation capacitor must be connected between LT1 and LT2. A low-frequency compensation capacitor must be connected between LT2 and LT3.
32	L COM	–	1dB volume common pin. (Connected to GND through a capacitor)
33	LVR IN	I	4dB volume control input. Must be driven at a low impedance.
34	LSELO	O	Input selector output pin.
35	AUX (L)	I	Signal input pins.
36	CD (L)		
37	RA (L)		
38	TA (L)		
39	VDD	–	Power supply.

IC DESCRIPTION -2/2 (LC75374E) -2/2

Pin No.	Pin Name	I/O	Description
40	TA (R)	I	Signal input pins.
41	RA (R)		
42	CD (R)		
43	AUX (R)		
44	RSELO	O	Input selector output pin.



MECHANICAL PARTS LIST -1/1

! = SAFETY PARTS
 C = Components marked

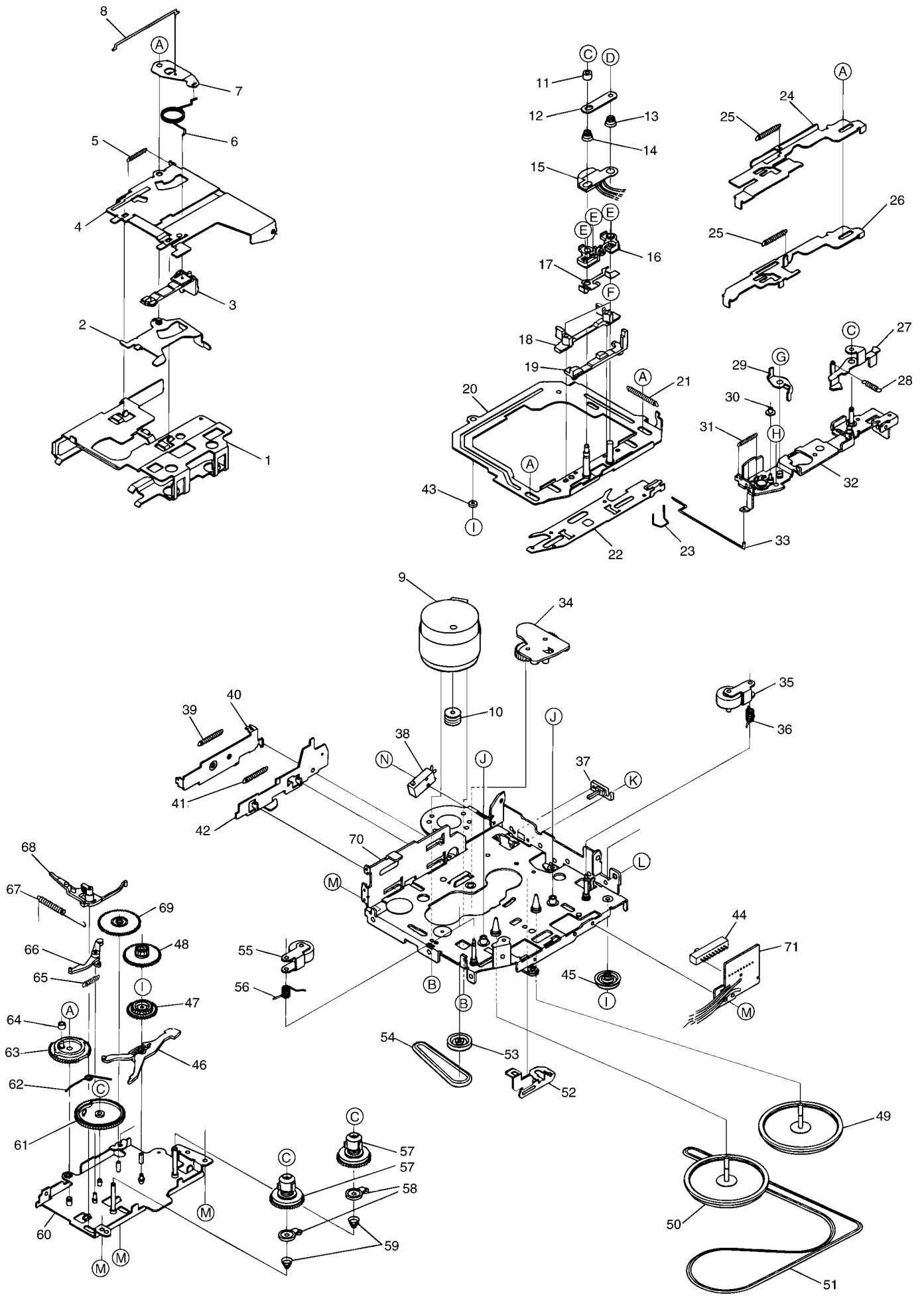
All components used on this model at the production line are shown in this service manual.
 However, please note that not all components will be available as spare parts for after-sales service.
 Components marked S and O are designated as spare parts for service and will be stocked at the spare parts centers.
 Components marked X and R are not designated as spare parts for after sales service, and will not be stocked at the spare parts centers.

UNIT-NAME	! C	REF-NO	PARTS-NO	PARTS-NAME	SUFFIX&MODEL
					CT-R432M YZSF
	O	MC1001	8C-KTA-001-010	WINDOW,R432M	a
	O	MC1002	8C-KCG-022-010	LENS,RTRY	a
	O	MC1003	8C-KCG-021-010	KNOB,RTRY	a
	O	MC1004	8B-KCG-253-010	SPR-C,ROTARY -BC2	a
	O	MC1005	8C-KC1-013-010	BTN,OV DISP/AF	a
	O	MC1006	8C-KCG-018-010	BTN,SEESAW L	a
	O	MC1007	8C-KC1-011-010	CABI,OV 2	a
	O	MC1008	8C-KCG-015-010	BTN, OV B	a
	O	MC1009	8C-KCG-215-010	LENS, L	a
	O	MC1010	8C-KCG-014-010	BTN, OV R	a
	O	MC1011	8C-KCG-013-010	BTN, OV OUT	a
	O	MC1012	8C-KTF-004-010	BTN,OVAL POWER	a
	O	MC1013	8C-KTF-005-010	BTN,EJECT CKT	a
	O	MC1014	8B-KTF-204-010	SPR-C,EJ/FF/REW	a
	O	MC1015	8C-KTF-009-010	BTN,REW CKT	a
	O	MC1016	8C-KTF-008-010	BTN,FF CKT	a
	O	MC1017	8C-KCF-006-010	BTN,P.SET RPT	a
	O	MC1018	8C-KCG-216-010	LENS, R	a
	O	MC1019	8C-KTF-001-010	CABI,FRONT CKT	a
	O	MC1020	8C-KCG-023-010	BTN, DETACH	a
					CT-R432M YZSF
	O	MC1021	8Z-KC2-223-010	SPR-C,DETACH -C2	a
	X	MC1022	8C-KTF-204-010	HLDR,LCD R	a
	X	MC1023	8C-KTF-203-010	HLDR,LCD L	a
	O	MC1024	8C-KTF-610-010	LCD,CKT-10/15	a
	X	MC1025	8C-KTF-201-110	LENS,LCD	a
	X	MC1026	8C-KTF-202-010	CASE,LCD LENS	a
	O	MC1027	8A-KC7-611-010	F-CABLE,3P (AUX)	a
	X	MC1028	8C-KTF-603-010	PWB,FRONT	a
	O	MC1029	8C-KTF-002-010	CABI,REAR CKT	a
	O	MC1030	85-HRL-623-010	JACK,3.5 BLK ST BLK	a
	X	MC1031	8C-KTF-604-010	PWB,AUX	a
	X	MC1032	87-A92-096-010	CABLE TIE,TYH-24M	a
	X	MC1033	M8-AZK-490-070	CDS-363AG1-A	a
	O	MC1034	8Z-KC2-203-210	LEVER,DFP HOOK -C2	a
	O	MC1035	8Z-KC2-221-110	SPR-C,DETACH HOOK-C2	a
	O	MC1036	8C-KTF-011-110	CABI,BASE CKT	a
	O	MC1037	8Z-KT1-244-010	SPR-T,DOOR Z	a
	O	MC1038	8B-KT9-023-110	DOOR,CASSETTE	a
	O	MC1039	8Z-KC2-222-010	SPR-T,DETACH LOCK-C2	a
	O	MC1040	8C-KCG-205-010	LEVER,DFP LOCK	a
					CT-R432M YZSF
	X	MC1041	8C-KTF-209-010	CHAS,FRONT CKT	a
	O	MC1042	8C-KCG-202-010	CHAS, SIDE R C	a
	O	MC1043	8C-KCG-201-010	CHAS, SIDE L C	a
	X	MC1044	8C-KTF-207-010	HLDR,DECK CKT	a
	! S	MC1045	8B-KC1-621-010	FUSE,15A 32V	a
	O	MC1046	8Z-KC1-256-010	COVER, BOTTOM RDS	a
	X	MC1047	8C-KTF-601-010	PWB,MAIN (CKT-15)	a
	O	MC1048	8Z-KC1-231-110	HLDR,HALF -C	a
	X	MC1049	8C-KCG-251-010	PANEL,HT-SINK Z2C	a
	O	MC1050	8A-KCG-211-010	HLDR,P-IC -AC16	a
	X	MC1051	8C-KTF-212-010	HLDR,DIN NT	a
	O	MC1052	8C-KCG-036-010	CABI, TRIM 16	a
	O	MC1053	8C-KC1-012-010	BTN,OV T	a
	X	MC1054	8C-KCG-255-010	TUBE,ISO WIRE D12	a
	X	MC1055	8A-KCG-615-010	WIRE,400 P-MUTE	a
	O	MC1056	8A-KT1-646-010	CONN ASSY,8P ISO-WHITE-B	a
	O	MC1057	8A-KT1-645-010	CONN ASSY,8P ISO-BLACK-B	a
	X	MC1058	8C-KCG-254-010	HLDR,ISO-WIRE	a
	O	MC1A	8Z-KC1-253-010	S-SCREW,PT 2*8 BH+ BLK	a
	O	MC1B	87-B10-399-010	UIT+2.6-5 BLK	a
					CT-R432M YZSF
	O	MC1C	87-B10-384-010	UIT+2.6-6	a
	O	MC1D	87-B10-386-010	UTT2+2.6-5 W/O SLOT	a
	O	MC1E	87-B10-397-010	UTT2+2.6-4 W/O SLOT	a
	O	MC1F	87-B10-259-010	UT2+3.0-10.0 W/O SLOT (BH TAP)	a
	O	MC1G	87-251-097-410	U+3-12	a
	O	MC1H	87-432-903-010	WTE,2.6	a

COLOR NAME TABLE -1/1

Basic color symbol	Color	Basic color symbol	Color	Basic color symbol	Color
B	Black	C	Cream	D	Orange
G	Green	H	Gray	L	Blue
LT	Transparent Blue	N	Gold	P	Pink
R	Red	S	Silver	ST	Titan Silver
T	Brown	V	Violet	W	White
WT	Transparent White	Y	Yellow	YT	Transparent Yellow
LM	Metallic Blue	LL	Light Blue	GT	Transparent Green
LD	Dark Blue	DT	Transparent Orange	GM	Metallic Green
YM	Metallic Yellow	DM	Metallic Orange	PT	Transparent Pink
LA	Aqua Blue	GL	Light Green	HT	Transparent Gray
HM	Metallic Gray	NH	Champagne Gold	M	Wood Pattern

TAPE MECHANISM EXPLODED VIEW -1/1 (CDS-363AG1-A)



TAPE MECHANISM PARTS LIST -1/2 (CDS-363AG1-A)

! = Δ SAFTY PARTS
 C = Components marked

All components used on this model at the production line are shown in this service manual.

However, please note that not all components will be available as spare parts for after-sales service.

Components marked S and O are designated as spare parts for service and will be stocked at the spare parts centers.

Components marked X and R are not designated as spare parts for after sales service, and will not be stocked at the spare parts centers.

UNIT-NAME	! C	REF-NO	PARTS-NO	PARTS-NAME	SUFFIX&MODEL
					CDS-363AG1-A
	O	ST1001	S1-013-810-100	HOLDER CASS(X)	a
	O	ST1002	SX-003-610-190	EJECT CAM LOCK ASSY	a
	O	ST1003	S1-003-220-070	TAPE HOOKER	a
	O	ST1004	S1-013-810-020	HANGER CASS(X)	a
	O	ST1005	S1-003-640-070	EJECT CAM LOCK SPG	a
	O	ST1006	S1-003-640-230	CENTER PLATE SPG(B)	a
	O	ST1007	S1-003-610-180	PLATE CENTER	a
	O	ST1008	S1-036-350-070	RETURN LINK	a
	O	ST1009	S1-003-670-570	MOTOR	a
	O	ST1010	S1-036-330-420	MOTOR PULLEY(MBC)	a
	O	ST1011	S1-003-630-320	ROLLER FF(A)	a
	O	ST1012	S1-003-610-150	PLATE SPG SUPPORT	a
	O	ST1013	S1-003-640-100	ADJUSTER ARM SPG(A)	a
	O	ST1014	S1-003-640-110	ADJUSTER ARM SPG(B)	a
	O	ST1015	S1-036-370-040	HEAD	a
	O	ST1016	S1-013-820-053	ADJUSTER ARM BLUE	a
	O	ST1017	S1-013-810-060	ADJUSTER SHIM(X)	a
	O	ST1018	S1-003-820-180	GUIDE TAPE	a
	O	ST1019	S1-036-320-060	LINK ADJUSTER(B)	a
	O	ST1020	SX-036-310-020	HEAD PLATE ASSY	a
					CDS-363AG1-A
	O	ST1021	S1-003-640-060	PLATE SPG HEAD	a
	O	ST1022	SX-036-310-040	FR CONVRT ARM ASSY(A)	a
	O	ST1023	S1-003-640-170	SW SELECT ARM SPG	a
	O	ST1024	S1-003-610-510	LEVER FF(AT)	a
	O	ST1025	S1-003-640-010	LEVER SPG FF/REW	a
	O	ST1026	S1-003-610-530	LEVER REW(AT)	a
	O	ST1027	S1-003-610-290	ARM LOCK(A)	a
	O	ST1028	S1-003-640-020	LEVER SPG LOCK	a
	O	ST1029	S1-003-610-230	LEVER CHANG(B)	a
	O	ST1030	S1-036-330-110	ROLLER PROGRAM	a
	O	ST1031	S1-003-640-080	ARM SPG PROGRAM	a
	O	ST1032	SX-036-360-020	LEVER BRACKET ASSY	a
	O	ST1033	S1-036-350-030	SELECTOR LINK(B)	a
	O	ST1034	SX-036-360-030	TU GEAR ARM ASSY	a
	O	ST1035	SX-036-360-050	PINCH ARM ASSY(F)	a
	O	ST1036	S1-036-340-030	PINCH ARM SPG(F)	a
	O	ST1037	S1-036-370-010	SW,MUTE	a
	O	ST1038	S1-036-370-050	SW POWER	a
	O	ST1039	S1-036-340-050	LEVER SPG EJECT	a
	O	ST1040	S1-003-610-070	LEVER EJECT	a
					CDS-363AG1-A
	O	ST1041	S1-036-340-060	CAM SPG EJECT	a
	O	ST1042	S1-036-310-030	CAM EJECT	a
	O	ST1043	S1-036-330-070	ROLLER HP(A)	a
	O	ST1044	S1-036-370-020	SW,SLIDE	a
	O	ST1045	S1-005-820-215	IDLE PULLEY(A)	a
	O	ST1046	S1-003-620-090	ARM SENSOR	a
	O	ST1047	S1-003-620-010	GEAR IDLE	a
	O	ST1048	S1-003-620-040	GEAR REDUCTION(A)	a
	O	ST1049	S1-036-360-100	FLYWHEEL ASSY(F) CPL	a
	O	ST1050	S1-036-360-110	FLYWHEEL ASSY(R) CPL	a
	O	ST1051	S1-003-650-040	BELT MAIN	a
	O	ST1052	S1-003-610-260	ARM FR(B)	a
	O	ST1053	S1-036-320-030	GEAR PULLEY	a
	O	ST1054	S1-036-350-010	BELT SUB	a
	O	ST1055	SX-036-360-040	PINCH ARM ASSY(R)	a
	O	ST1056	S1-036-340-040	PINCH ARM SPG(R)	a
	O	ST1057	SX-036-320-050	REEL SPINDLE ASSY	a
	O	ST1058	SX-036-360-060	DETECTOR CAM ASSY(V)	a
	O	ST1059	S1-013-840-010	BACK TENSION SPG	a
	O	ST1060	SX-036-360-010	REEL BASE ASSY	a
					CDS-363AG1-A
	O	ST1061	S1-003-620-140	GEAR DETECTR	a
	O	ST1062	S1-003-640-150	DASH SPG	a
	O	ST1063	S1-003-620-100	GEAR SELECTOR	a
	O	ST1064	S1-003-630-180	COLLER(SELECTOR GEAR)	a
	O	ST1065	S1-003-640-030	GEAR LOCK ARM SPG	a
	O	ST1066	S1-003-820-140	GEAR LOCK ARM	a
	O	ST1067	S1-003-840-140	RATCHET SPG	a
	O	ST1068	S1-003-620-070	RATCHET	a
	O	ST1069	S1-003-620-030	GEAR REDUCTION(B)	a
	X	ST1070	SX-036-310-010	MAIN CHASSIS ASSY	a
	X	ST1071	S1-036-370-030	PWB SW SLIDE	a
	O	ST1A	S2-171-200-501	E-RING 2	a
	O	ST1B	S2-103-200-25C	SCREW,M2-2.5	a
	O	ST1C	S1-003-650-240	PSW(REEL)B 1.5-3.2-0.25	a
	O	ST1D	S2-101-200-40C	SCREW,M2-4	a
	O	ST1E	S1-013-850-020	SCREW,M2-5	a
	O	ST1F	S2-103-200-70C	SCREW,M2-7	a
	O	ST1G	S2-171-250-601	E-RING 2.5	a
	O	ST1H	S2-133-200-40C	SCREW,S-TYPE M2-4	a
	O	ST1I	S2-181-200-30D	PSW-S 1.2-3.0-0.25	a

TAPE MECHANISM PARTS LIST -2/2 (CDS-363AG1-A)

! = Δ SAFTY PARTS

C = Components marked

All components used on this model at the production line are shown in this service manual.

However, please note that not all components will be available as spare parts for after-sales service.

Components marked S and O are designated as spare parts for service and will be stocked at the spare parts centers.

Components marked X and R are not designated as spare parts for after sales service, and will not be stocked at the spare parts centers.

UNIT-NAME	! C	REF-NO	PARTS-NO	PARTS-NAME	SUFFIX&MODEL
					CDS-363AG1-A
	O	ST1J	S2-181-600-32E	LMW-S 1.6-3.2-0.35	a
	O	ST1K	S2-133-170-40C	SCREW,S-TYPE M1.7-4	a
	O	ST1L	87-B10-255-010	SCREW,M2-3	a
	O	ST1M	S2-138-200-30C	SCREW,B-TYPE M2-3	a
	O	ST1N	S2-133-170-60C	SCREW,S-TYPE M1.7-6	a

OTHERS PARTS LIST -1/2 (CT-R432M) -1/1

! = Δ SAFTY PARTS
 C = Components marked

All components used on this model at the production line are shown in this service manual.
 However, please note that not all components will be available as spare parts for after-sales service.
 Components marked S and O are designated as spare parts for service and will be stocked at the spare parts centers.
 Components marked X and R are not designated as spare parts for after sales service, and will not be stocked at the spare parts centers.

UNIT-NAME	! C	REF-NO	PARTS-NO	PARTS-NAME	SUFFIX&MODEL
					CT-R432M
					YZSF
	X		89-931-030-110	WIRE,UB1-3-3	a
	X		87-B40-281-010	LBL,BAR-CODE A 35X8	a
	X		87-B40-154-010	LBL,BAR-CODE CU	a
	X		8C-KTA-005-010	LBL,SPEC YZ R432M	a
	X		8C-KTF-206-010	SH,ADH WINDOW	a
	X		8C-KTF-205-010	SH,LCD	a
	X		8Z-KC1-234-210	SH,PWB	a
	X		87-B40-087-010	BAG,PV 0.04-250-350 PL	a
	X		8C-KTA-852-010	CTN,OUTER 432M YZSF	a
	X		8C-KTA-851-010	CTN,PRINTED 432M YZSF	a
	X		8Z-KC1-871-010	CUSHION,DFP-GUARD	a
	X		8C-KCF-851-010	CUSHION,LEFT AIS	a
	X		8C-KCF-852-010	CUSHION,RIGHT AIS	a
	X		8C-KCF-854-010	PAD,A	a
	X		87-B40-454-010	BAG,PP 0.04-230-350 PL	a
	X		87-056-168-010	SH,CAUTION INF-WARR(EC)	a
	X		8C-KTF-907-010	SH,DEMO (14L)F 432	a
	X		8C-KCG-906-010	SH,SCREW DFP (14L)F	a
	X		8C-KTF-970-010	LBL,POP YU	a
	X		87-B40-178-010	BAG,PV 0.04-100-250	a
					CT-R432M
					YZSF
	X		87-B40-179-010	BAG,PV 0.04-50-100	a
	X		87-B40-242-010	BAG,PV 0.04-70-100	a
	X		8B-KTF-202-010	CUSHION,CASSETTE	a
	X		8C-KCG-233-010	CUSHION,DFP-CASE	a

OTHERS PARTS LIST -2/2 (CDS-363AG1-A) -1/1

! = Δ SAFTY PARTS

C = Components marked

All components used on this model at the production line are shown in this service manual.

However, please note that not all components will be available as spare parts for after-sales service.

Components marked S and O are designated as spare parts for service and will be stocked at the spare parts centers.

Components marked X and R are not designated as spare parts for after sales service, and will not be stocked at the spare parts centers.

UNIT-NAME	! C	REF-NO	PARTS-NO	PARTS-NAME	SUFFIX&MODEL
					CDS-363AG1-A
	X		S1-003-670-020	WIRE (A) 60MM (BLK)	a
	X		S1-003-670-730	WIRE (AL) 60MM (YEL)	a
	X		S1-003-670-030	WIRE (B) 60MM (RED)	a

アイワ株式会社 〒110-8710 東京都台東区池之端1-2-11 ☎03(3827)3111 (代表)
AIWA CO.,LTD. 2-11, IKENOHATA 1-CHOME, TAITO-KU, TOKYO 110-8710, JAPAN TEL:03 (3827) 3111

0251431